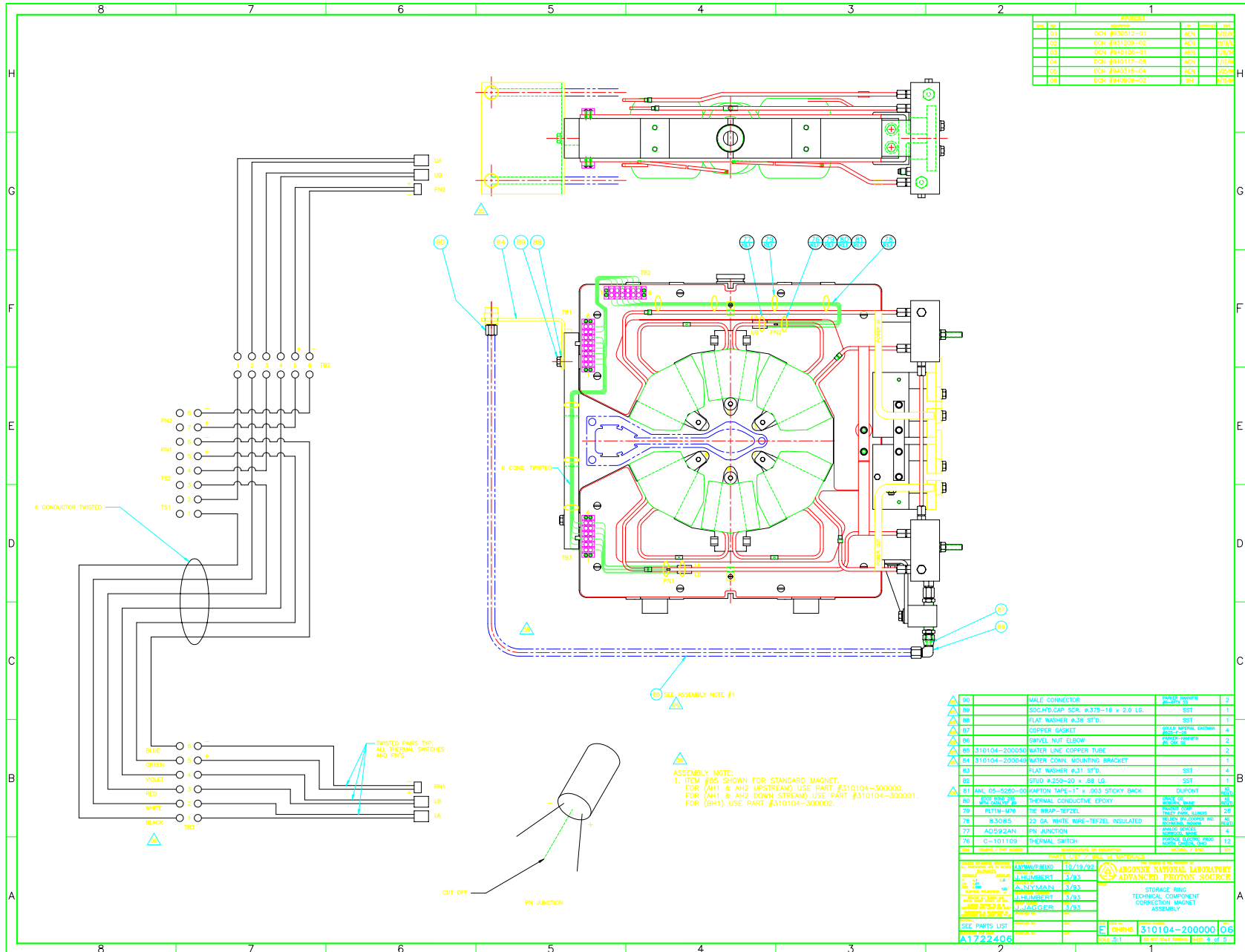


# SHEET 4 OF 5



REVISIONS				
REV.	NO.	DESCRIPTION	BY	DATE
01	DCN #930512-01	AEN	1/2/92	
02	DCN #931009-02	AEN	2/1/92	
03	DCN #940106-01	AEN	1/2/92	
04	DCN #940117-05	AEN	1/1/92	
05	DCN #940518-04	AEN	1/26/92	
06	DCN #940908-02	SH	1/15/92	

80	MALE CONNECTOR	3MM2 19MM	2
89	ROCK HD. CAP SCR. #375-16 x 2.0 LG.	SST	1
88	FLAT WASHER #38 STD.	SST	1
87	COPPER GASKET	SOLD BY QUANTITY	4
86	BWEL NUT ELBOW	30 002 19MM	2
85	310104-200050	WATER LINE COPPER TUBE	2
84	310104-200049	WATER COOL. MOUNTING BRACKET	1
83	FLAT WASHER #31 STD.	SST	4
82	STUD #350-20 x .88 LG.	SST	1
81	ANL. DS-3280-10	CUPTON TAPE-17 x .003 STICKY BACK	CUPOINT
80	3100 3000-09	THERMAL CONDUCTIVE EPOXY	UNCL. CO.
79	PLT10-M76	TRC WRAP-TEFZEL	WASHER COIL
78	83085	22 GA. WHITE WIRE-TEFZEL INSULATED	BELDEN 19 2000R 100
77	AD592AN	PN JUNCTION	TECHNICAL SOURCE
76	C-101109	THERMAL SWITCH	APPLIED ELECTRONICS

ASSEMBLY NOTE:  
 1. ITEM #85 SHOWN FOR STANDARD MAGNET.  
 FOR (AH1 & AH2 UPSTREAM) USE PART #310104-300000.  
 FOR (AH1 & AH2 DOWN STREAM) USE PART #310104-300001.  
 FOR (BH1) USE PART #310104-300002.

PARTS LIST / BILL OF MATERIALS			
REV.	DATE	BY	DESCRIPTION
1	10/19/92	ALYMAN	STORAGE RING
2	12/93	ALYMAN	TECHNICAL COMPONENT
3	12/93	ALYMAN	CORRECTION MAGNET
4	10/93	ALYMAN	ASSEMBLY

SEE PARTS LIST  
 A1722406

APPROVED BY: [Signature]  
 DATE: [Date]

TECHNICAL SOURCE: 310104-200000  
 DRAWN BY: [Name]  
 CHECKED BY: [Name]