

ESRF Facility & User Program Overview

Joanne McCarthy
Head of ESRF User Office

ESRF General Overview



Location of facility : Grenoble, France

Ground-Breaking : January 1988

First Light : February 1992 (storage ring),
November 1992 (beamline)

First official User Operation : September 1994
(8 beamlines)

Staff : 619 people work at ESRF (2012)

Annual Budget :

ESRF Operation ~86 M€ (~90M€ Upgrade
Programme over 2009-2015)

User Budget ~1.4 M€

(6% budget reduction 2011-2013)

ESRF General Overview

Member and associate countries (as of July 2013)



Members' share in contribution to the annual budget:

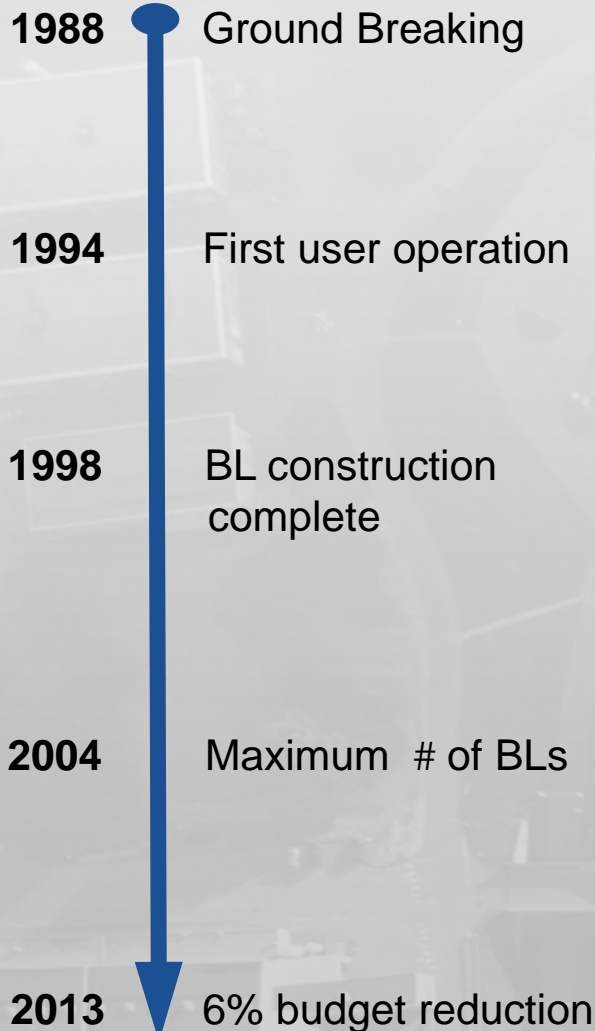
27.5%	France	
25.5%	Germany	
15%	Italy	13%
14%	United Kingdom	10%
4%	Spain	
4%	Switzerland	
6%	Benesync (Belgium, The Netherlands)	
4%	Nordsync (Denmark, Finland, Norway, Sweden)	

Additional contributions

(percentages refer to Members' total contribution):

1.3%	Austria
1%	Portugal
1%	Israel
1%	Poland
1.05%	Centralsync (Czech Republic, Hungary, Slovakia)
0.3%	South Africa – April 2013

Council Mandate : 30 public beamlines



**8 public
3 CRG**

**30 public
12 CRG**

**31.5 public
11 CRG**

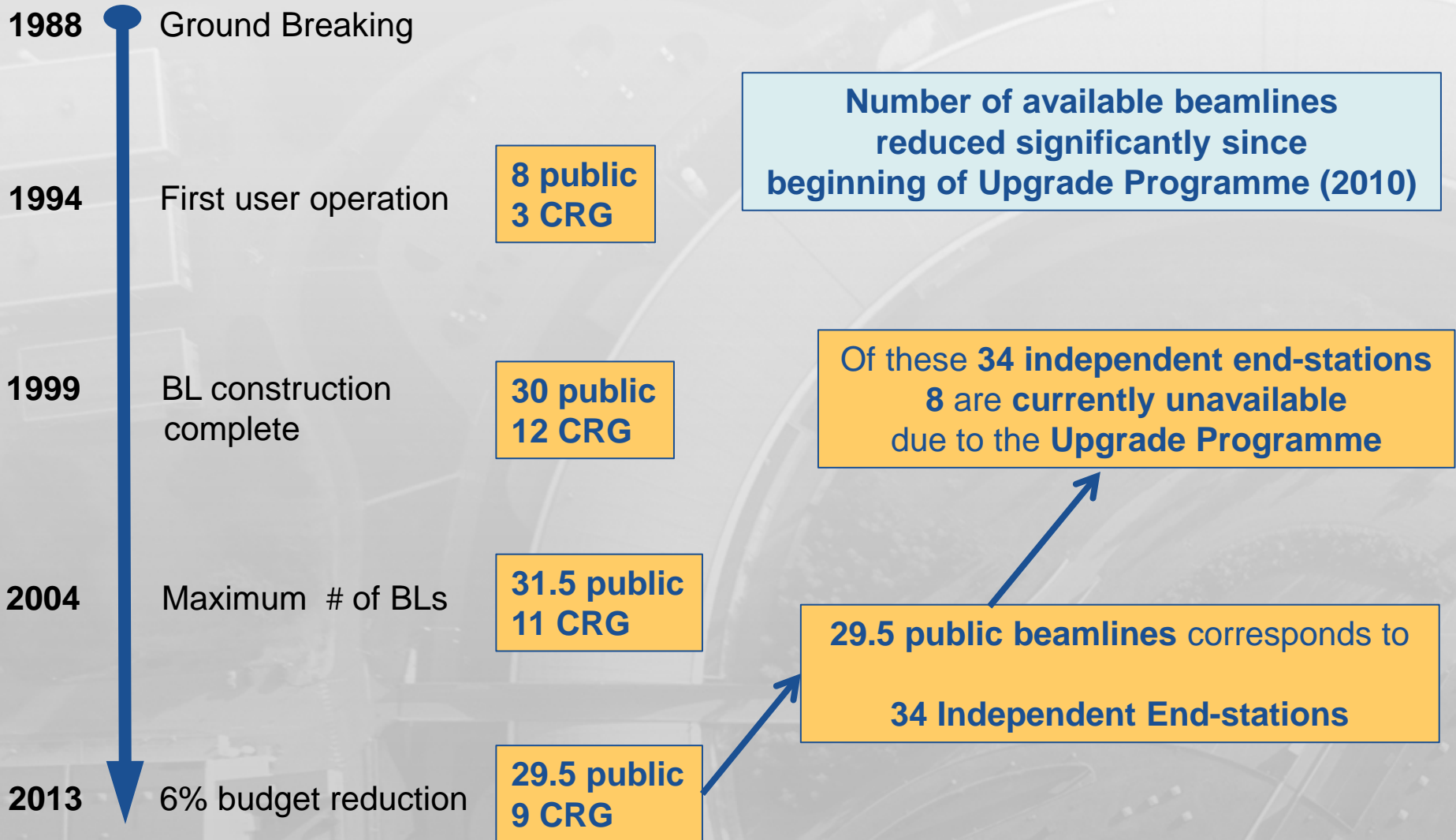
**29.5 public
9 CRG**

SOURCE POSITION	NUMBER OF INDEPENDENT END-STATIONS	BEAMLINE NAME	STATUS
ID01	1	Microdiffraction imaging	Operational since 07/97
ID02	1	High brilliance	Operational since 09/94
ID03	1	Surface diffraction	Operational since 09/94
ID08	1	Dragon	Operational since 02/00
ID09	1	White beam	Operational since 09/94
ID10	1	Soft interfaces and coherent scattering	Operational from 06/12
ID11	1	Materials science	Operational since 09/94
ID12	1	Circular polarisation	Operational since 01/95
ID13	1	Microfocus	Operational since 09/94
ID14A	1	Protein crystallography EH 1	Operational since 07/99
		Protein crystallography EH 2	Operational since 12/97
ID14B	1	Protein solution small-angle scattering EH 3	Operational since 12/98
		Protein crystallography EH 4	Operational since 07/99
ID15A	1	High energy diffraction	Operational since 09/94
ID15B	1	High energy inelastic scattering	Operational since 09/94
ID17	1	Medical	Operational since 05/97
ID18	1	Nuclear scattering	Operational since 01/96
ID19	1	Topography and tomography	Operational since 06/96
ID21	1	X-ray microscopy	Operational since 12/97
ID22	1	Microfluorescence	Operational since 12/97
ID23	2	Macromolecular crystallography MAD	Operational since 06/04
		Macromolecular crystallography microfocus	Operational since 09/05
ID24	1	Dispersive EXAFS	Operational since 02/96
ID26	1	X-ray absorption and emission	Operational since 11/97
ID27	1	High pressure	Operational since 02/05
ID28	1	Inelastic scattering II	Operational since 12/98
ID29	1	Multiwavelength anomalous diffraction	Operational since 01/00
ID31	1	Powder diffraction	Operational since 05/96
BM14	1	Macromolecular crystallography (MAD)	Operational since 01/10
BM23	1	X-ray absorption spectroscopy	Operational since 03/11
BM29	1	Bio SAXS	Operational since 06/12

SOURCE POSITION	NUMBER OF INDEPENDENT END-STATIONS	BEAMLINE NAME	FIELD OF RESEARCH	STATUS
BM01	2	Swiss-Norwegian BL	X-ray absorption & diffraction	Operational since 01/95
BM02	1	D2AM (French)	Materials science	Operational since 09/94
BM08	1	Cilda (Italian)	X-ray absorption & diffraction	Operational since 09/94
BM20	1	ROBL (German)	Radiochemistry & ion beam physics	Operational since 09/98
BM25	2	SPLINE (Spanish)	X-ray absorption & diffraction	Operational since 04/05
BM26	2	DUBBLE (Dutch/Belgian)	Small-angle scattering	Operational since 12/98
			EXAFS	Operational since 06/01
BM28	1	XMAS (British)	Magnetic scattering	Operational since 04/98
BM30	2	FIP (French)	Protein crystallography	Operational since 02/99
		FAME (French)	EXAFS	Operational since 08/02
BM32	1	IF (French)	Interfaces	Operational since 09/94

Table 7: List of the Collaborating Research Group beamlines.

Council Mandate : 30 public beamlines



ESRF Upgrade Programme

Renew beamline portfolio of the ESRF with
 minimum interruption of continued operation during the upgrade

Phase I (2009-2015)

- Construction of Experimental Hall Extension, EX2 (completed June 2013)
 - General shutdown from 5th December 2011 to 4th May 2012 (5 months)
- 3 classes of beamlines
 - UPBL beamlines: 8 UPBL projects,
15 independent endstations
 - Moving beamlines: 2 fully reburished + 2 moving I.Es
 - Non-moving beamlines: 15 I.Es
- 2013 busiest year for beamlines; 8 I.Es currently unavailable





Beamline Number	Original Beamline Name	Closure Date	Last Proposal Round	Last Scheduling Period	New Beamline Name	Opening Date	First Proposal Round	First Scheduling Period
ID01	Anomalous scattering Beamline	December 2013	Apr. 2013	2013/II		November 2014 tbc	Apr. 2014	2014/II
ID02	High Brilliance Beamline - SAXS/WAXS/USAXS/Time-Resolved	July 2013	Oct. 2012	2013/I	High Brilliance Beamline	April 2014 tbc	Oct. 2013	2014/I
ID03	Surface Diffraction Beamline							
BM05	X-ray Imaging Beamline	April 2011	Oct. 2010	2011/I	<i>Definitive closure as public beamline</i>			
ID06	<i>Not public beamline</i>				<i>Not public beamline following ID20 closure</i>			
ID06-LVP	<i>Not public beamline</i>				Large Volume Press Beamline	September 2012	Apr. 2012	2012/II
ID08	Soft X-ray Spectroscopy Beamline	October 2013	Oct. 2012	2013/I				
ID09A	White Beam Station - High Pressure Beamline							
ID09B	White Beam Station - Time-resolved Beamline							
ID10A	Troika I and III Beamline	December 2011	Apr. 2011	2011/II	Becomes ID10	May 2012	Oct. 2011	2012/I
ID10C	Troika I and III Beamline	December 2011	Apr. 2011	2011/II	<i>Definitive closure; Merged into ID10</i>			
ID10B	Troika II Beamline	December 2011	Apr. 2011	2011/II	<i>Definitive closure; Merged into ID10</i>			
ID11	Materials Science Beamline							
ID12	Circular Polarisation Beamline							
ID13	Microfocus Beamline							
ID14-1	Structural Biology Beamline	November 2012	April 2012	2012/II				
ID14-2	Structural Biology Beamline	April 2010	April 2009	2009/II				
ID14-3	Bio-SAXS Beamline	December 2011	Rolling	2011/II				
ID14-4	Structural Biology Beamline		Apr. 2013	2013/II				
ID15A	High Energy Diffraction and Scattering Beamline							
ID15B	High Energy Diffraction and Scattering Beamline							
ID16A	ID16 - Inelastic X-ray Scattering Beamline	December 2011	Apr. 2011	2011/II	Nano-Imaging (ID16A) and Nano-Analysis (ID16B) (NiNa) Beamline	March 2014 January 2014	Oct. 2013 Apr. 2013	2014/I 2013/II
ID16B								
ID17	Bio-medical Beamline							
ID18	Nuclear Resonance Beamline							
ID22N	Nuclear Resonance End-Station	1st March 2011	Apr. 2010	2010/II	<i>Definitive Closure</i>			
ID19	High-Resolution Diffraction Topography Beamline							
ID20	Magnetic Scattering Beamline	May 2011	Apr. 2010	2010/II	Inelastic X-ray Scattering Beamline	May 2013	Oct. 2012	2013/I
ID21	X-ray Microscopy Beamline							
ID22	Micro-Fluorescence, Imaging & Diffraction Beamline	April 2013	Apr. 2012	2012/II	High-Resolution Powder-diffraction Beamline	April 2014	Oct. 2013	2014/I
ID18F	Microanalysis End-Station	1st March 2011	Apr. 2010	2010/II	<i>Definitive Closure</i>			
ID23-1	Structural Biology Beamline							
ID23-2	Structural Biology Beamline							
BM23	<i>Not public beamline</i>				X-ray Absorption Spectroscopy Beamline	March 2011	Oct. 2010	2011/I
ID24	Dispersive EXAFS Beamline	28th July 2010	Oct. 2009	2010/I	Dispersive EXAFS Beamline	May 2012	Oct. 2011	2012/I
ID26	X-Ray Absorption & Emission Spectroscopy Beamline							
ID27	High Pressure Beamline							
ID28	Inelastic Scattering II Beamline							
ID29	Structural Biology Beamline							
BM29	X-ray Absorption Spectroscopy Beamline	26th May 2010	Oct. 2009	2010/I	Bio-SAXS Beamline MASSIF Beamline - Screening Stations A-1, A-2, A-3 MASSIF Beamline - MAD Station B	June 2012 November 2013 tbc ???	Rolling Apr.2013	2012/I 2013/II
ID30A	<i>Not public beamline</i>							
ID30B	<i>Not public beamline</i>							
ID31	High-Resolution Powder-diffraction Beamline	December 2013	Apr. 2013	2013/II				
ID32	Surface XRD, SEXAFS and X-ray Standing Waves	December 2011	Apr. 2011	2011/II	Soft X-ray Spectroscopy Beamline	March 2014 tbc	Oct. 2013	2014/I
BM01A	Swiss-Norwegian CRG Beamline : Diffraction							
BM01B	Swiss-Norwegian CRG Beamline : XAS and HRPD							
BM02	D2AM French CRG Beamline							
BM08	X-ray Diffraction and Absorption Beamline							
BM14	CRG MX Beamline		Apr. 2009	2009/II	ESRF/EMBL/INDIA MX Beamline		Oct. 2009	2010/I
BM16	Macromolecular Crystallography & SAXS/WAXS	December 2011	Oct. 2010	2011/I	<i>Closed as Spanish CRG end of 2011; decommissioned from Summer 2011</i>			
BM20	The Rossendorf CRG Beamline							
BM25A	Absorption & Diffraction CRG Beamline							
BM25B	Absorption & Diffraction CRG Beamline							
BM26A	DUBBLE - Dutch-Belgian CRG Beamline : EXAFS							
BM26B	DUBBLE - Dutch-Belgian CRG Beamline : SAXS/WAXS							
BM30A	French Beamline for Investigation of Proteins							
BM30B	Absorption Spectroscopy French CRG Beamline							
BM32	Surfaces & Interfaces French CRG Beamline							

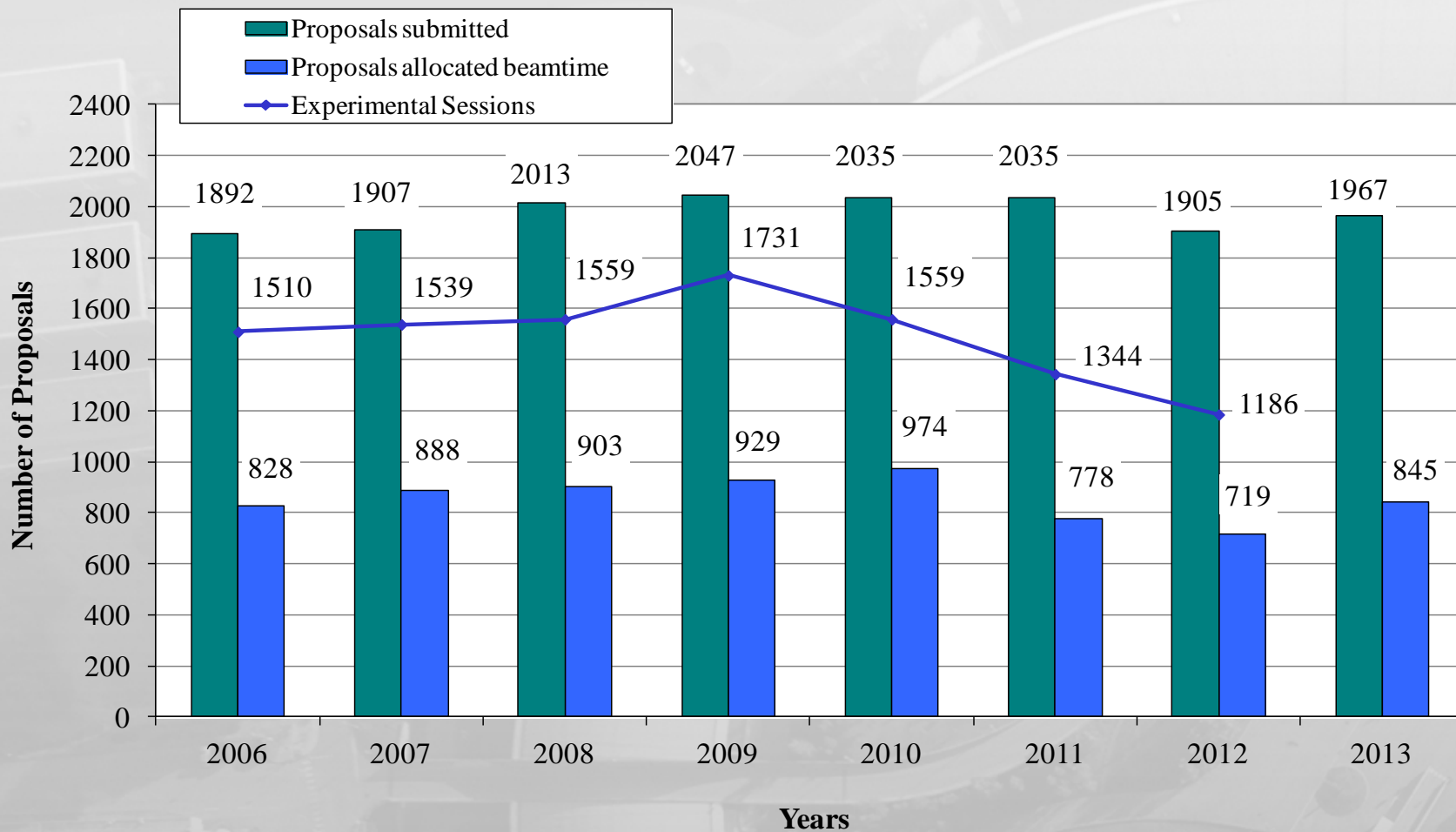
ESRF Upgrade Programme

Phase II : 2015 - 2020

- 2013 : Technical Design Study report in preparation in collaboration with user community, SAC and APAC
- Storage ring replacement
 - reduce horizontal emittance to ≥ 100 pm
 - would mean 1 year shutdown in 2018-2019
- 4 new upgrade beamlines
- Vercors extension for up to 5 long beamlines

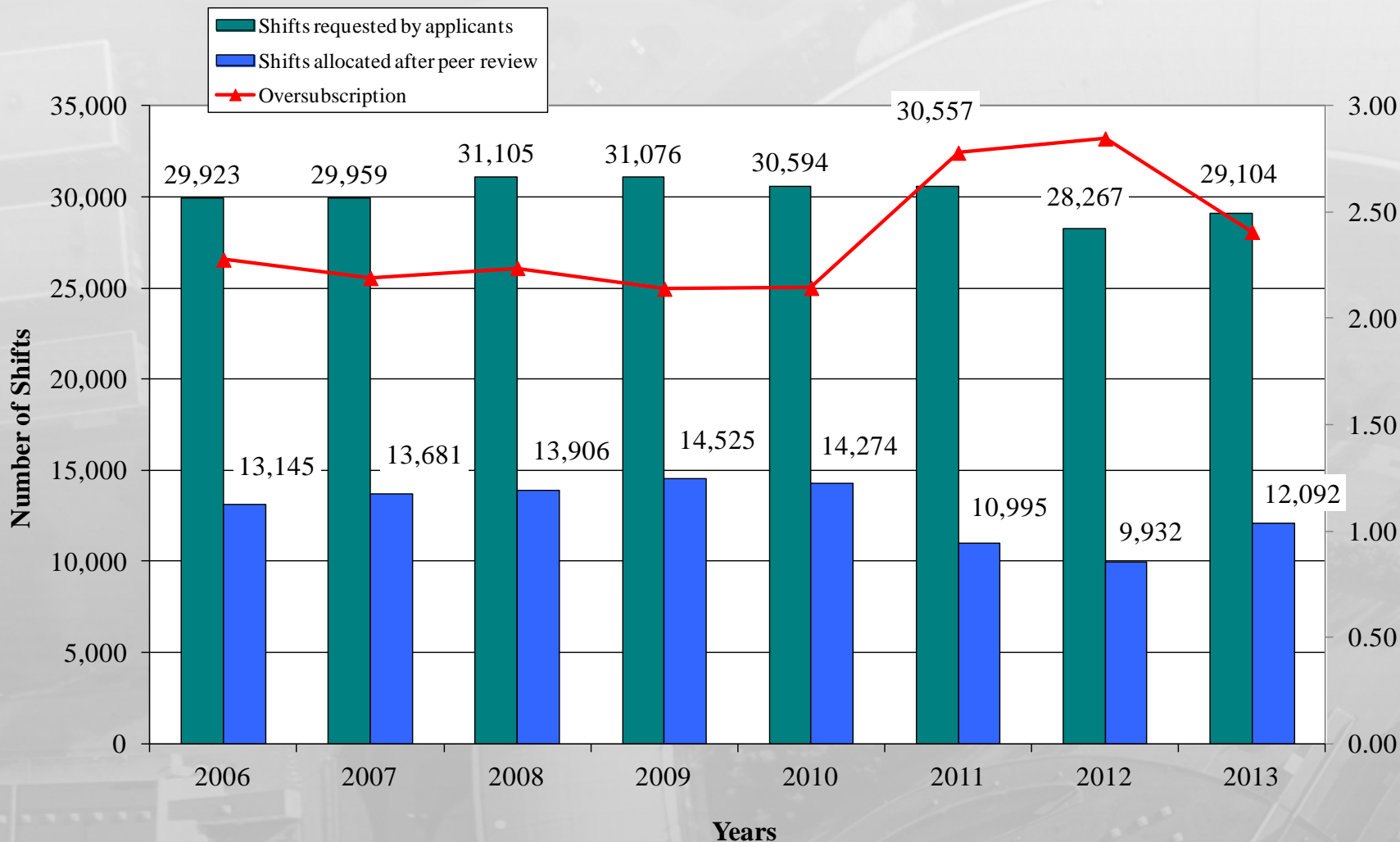


Proposals submitted and allocated beamtime, 2006-2013

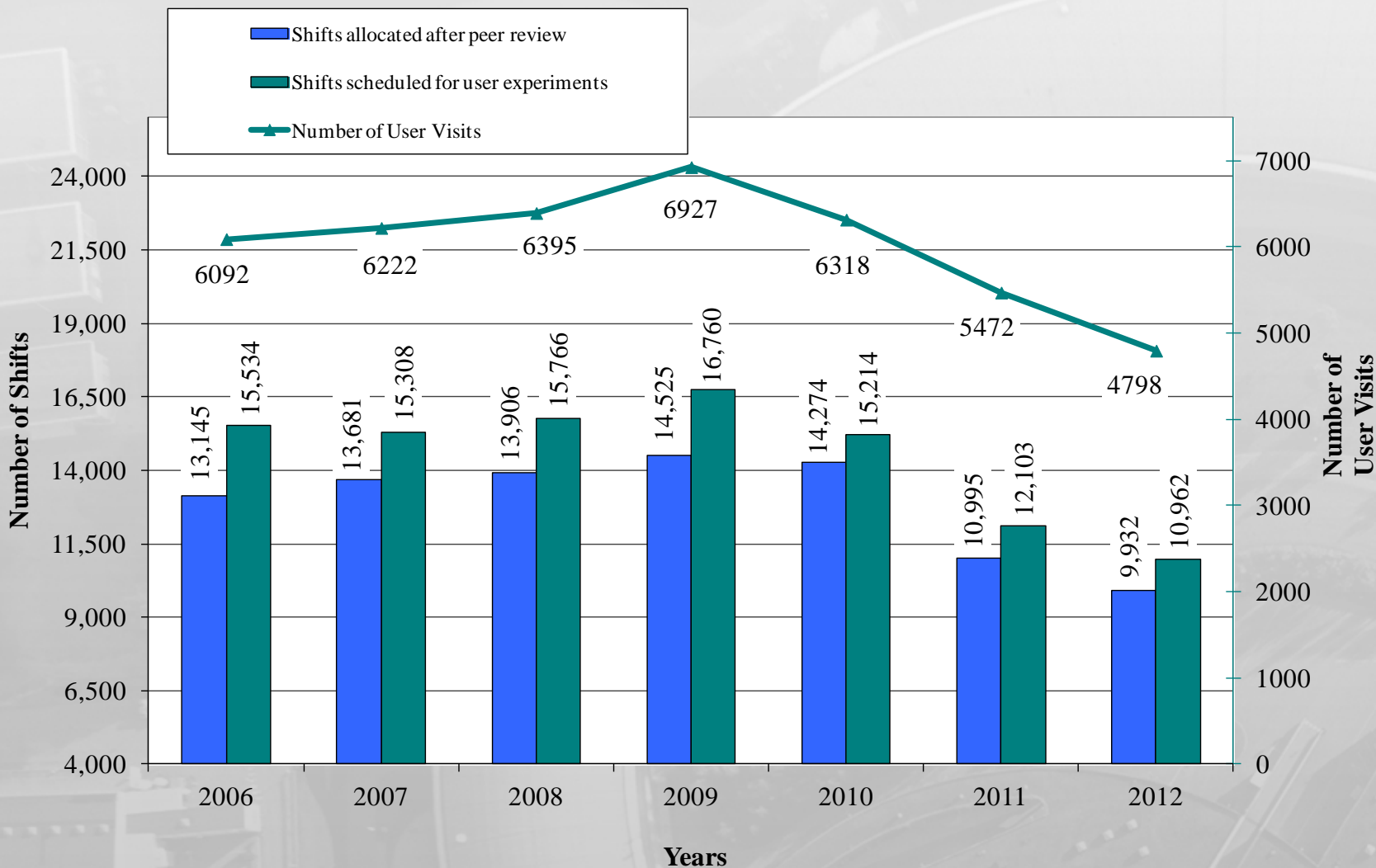


- 2011 & 2012 : ESRF General Shutdown + start of UP beamline work
- 2013 : Popular beamlines unavailable due to UP, e.g. ID22, ID02, ID08, some MX beamlines...

Shifts of beamtime requested and allocated, 2006-2013



Shifts allocated and delivered for experiments, User visits, 2006-2012



ESRF User Community

2013 : NEW PROPOSAL REVIEW STRUCTURE !!

CH - Chemistry

ES - Earth Sciences

EV - Environment

HC - Hard Condensed Matter

HG - Cultural Heritage

LS - Life Sciences

MA - Applied Materials

MD - Medicine

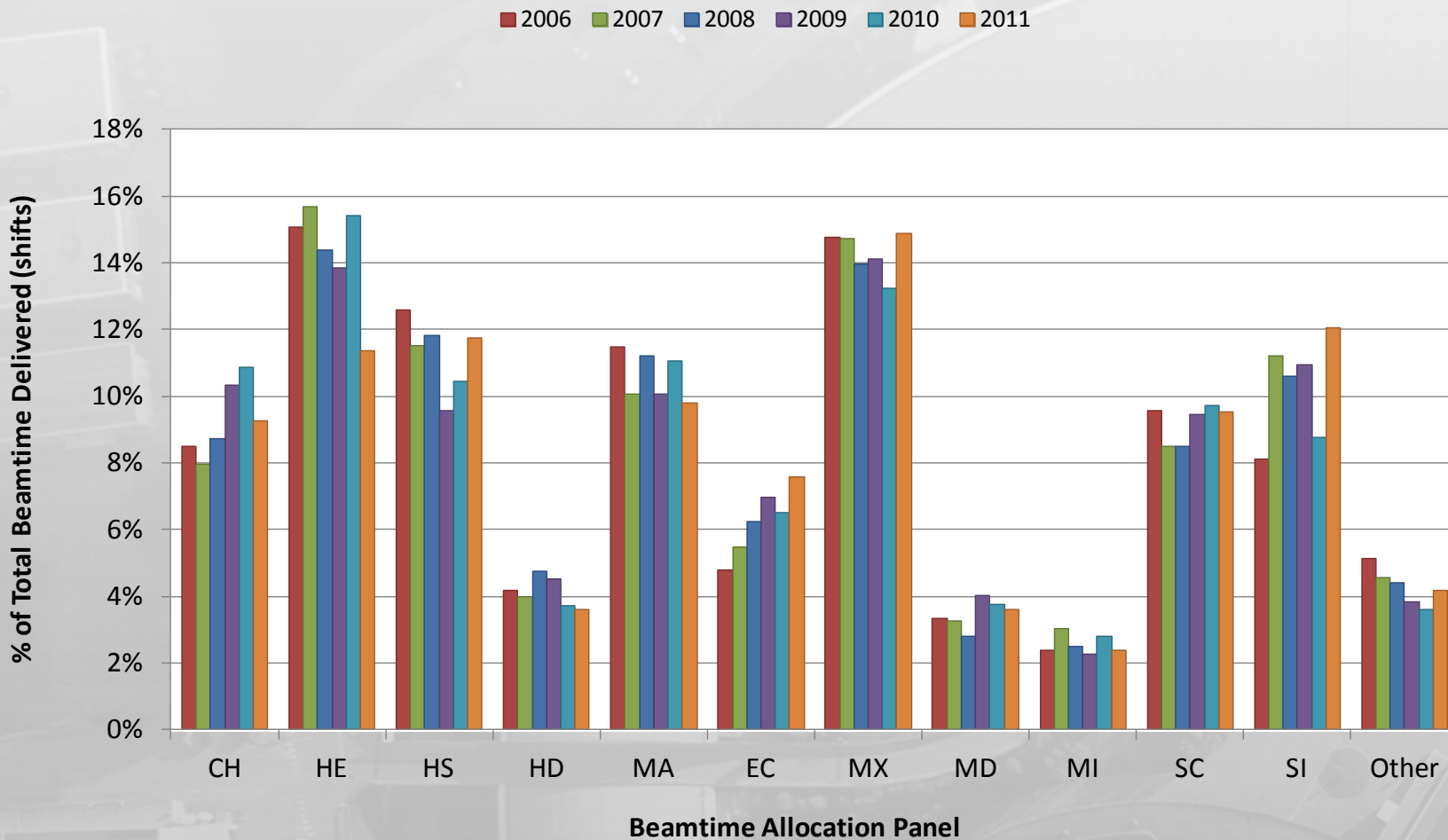
ME - Engineering

MI - Methods and Instrumentation

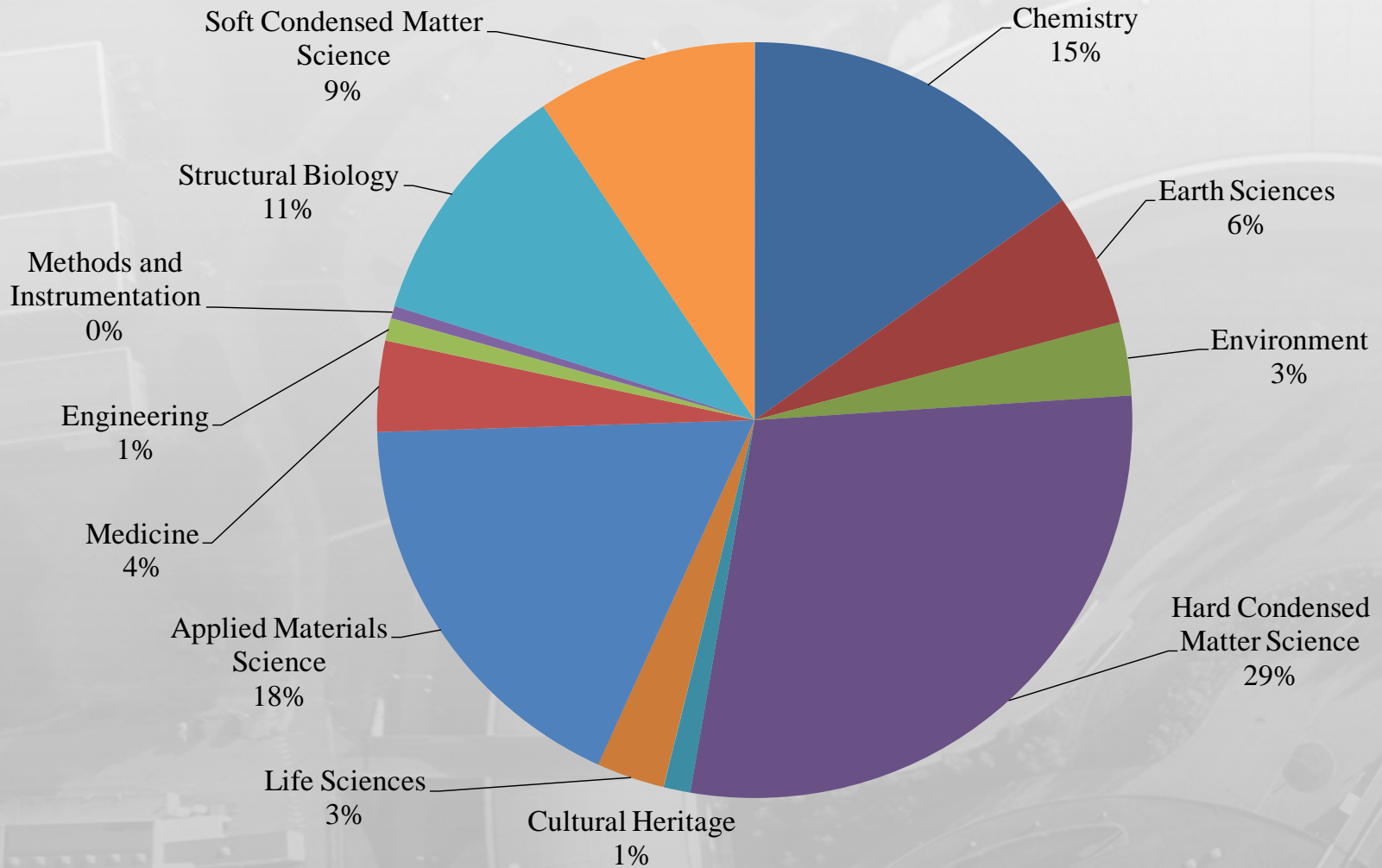
MX - Structural Biology

SC - Soft Condensed Matter

Beamtime Delivered per Review Panel, 2006-2011

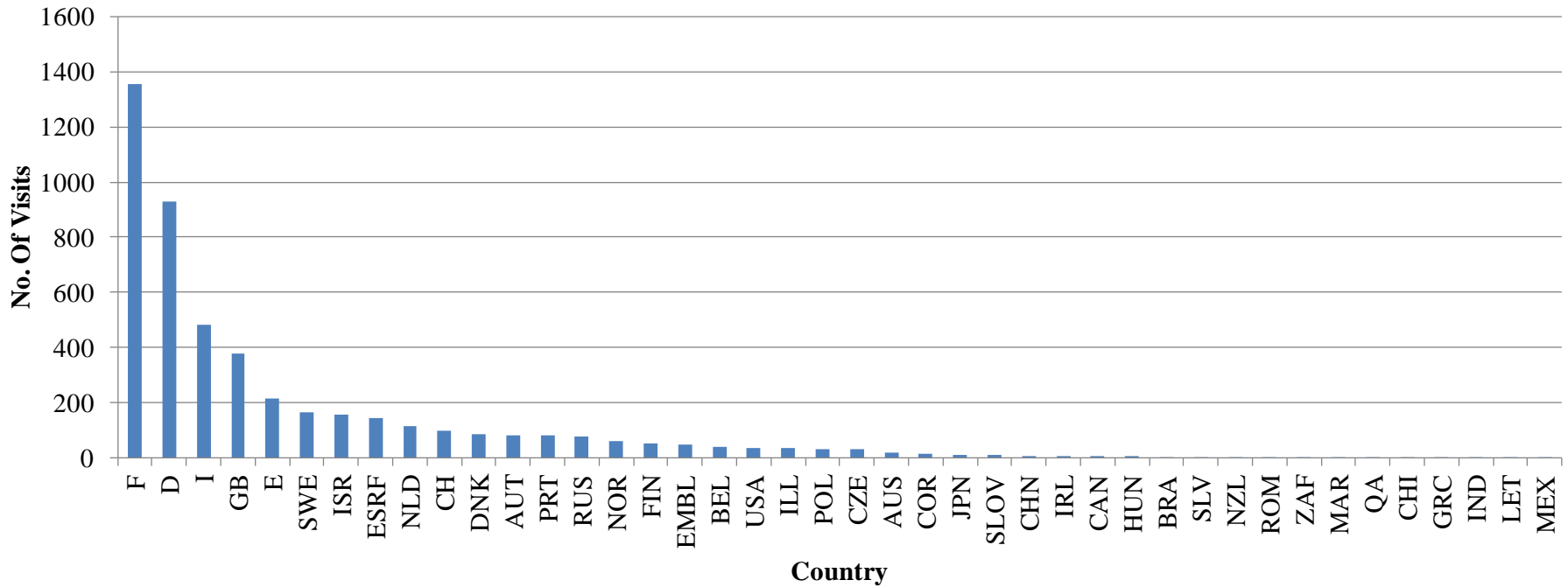


Beamtime Requested 2013 (15045 shifts)



ESRF User Community

User Visits by Country, 2012 (4798)



Country

Categories of Proposals and Users

Collaborating
Research
Group (CRG)
Proposals

CRG
Office

1 Head of Service
2.5 administrative staff
Deals with ALL admin
areas of CRG operation

Public peer-reviewed
proposals

User
Office

1 Head of Service
2.3 administrative staff



Proprietary
Research
Proposals

BDO

~4 full time equivalents
(1 administrative staff)

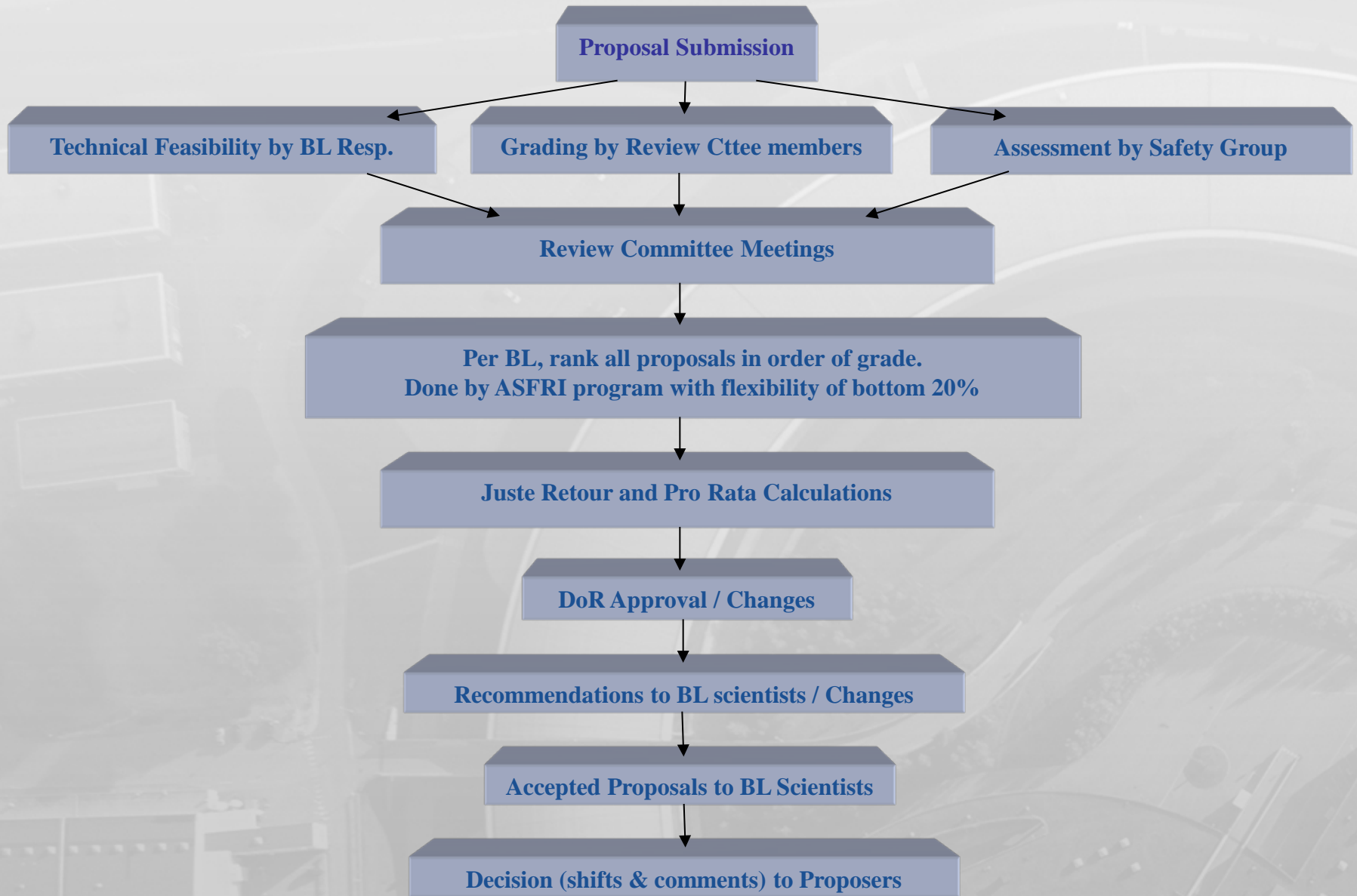
REVIEWED PROPOSALS

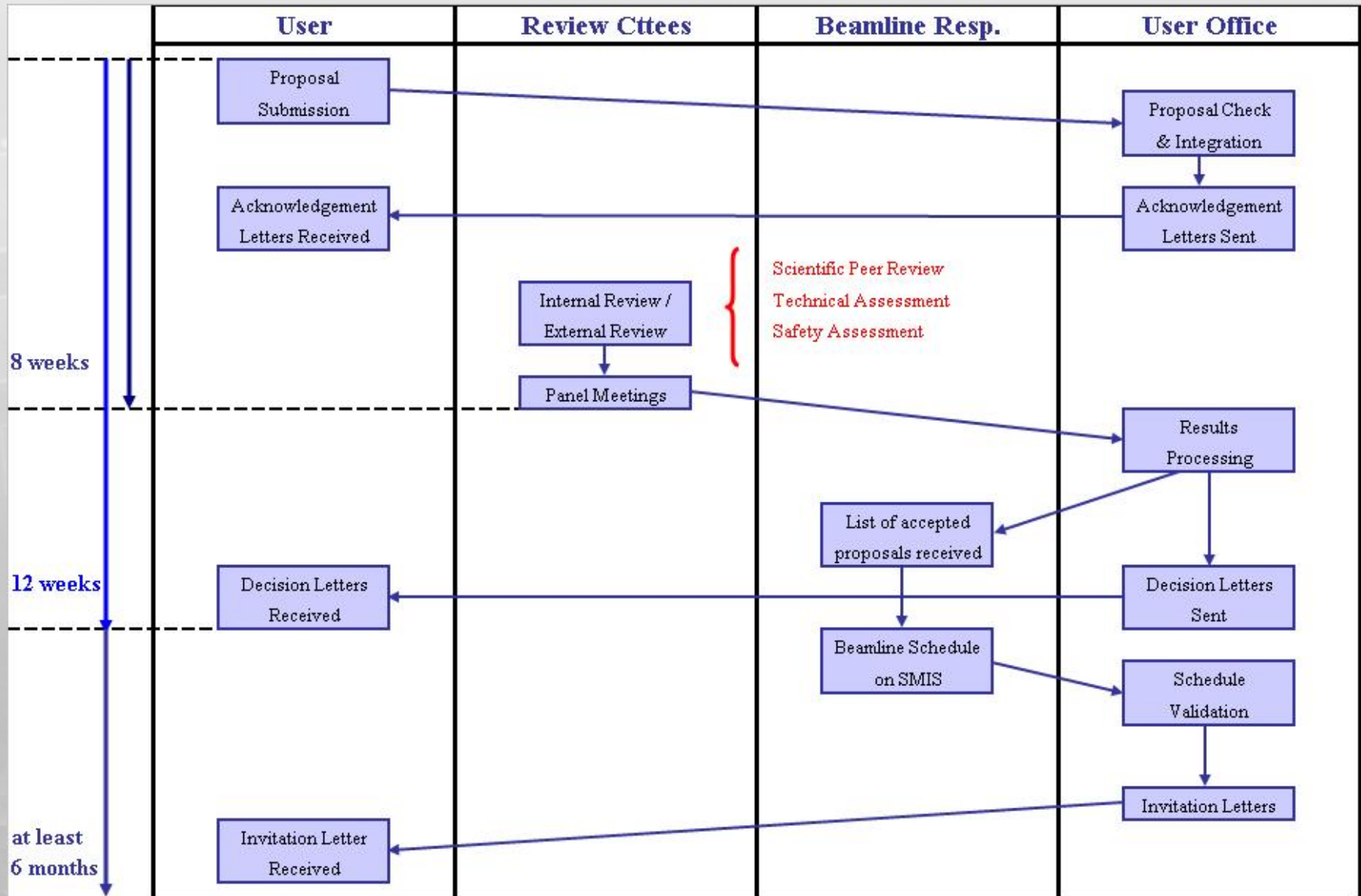
STANDARD Research Proposals

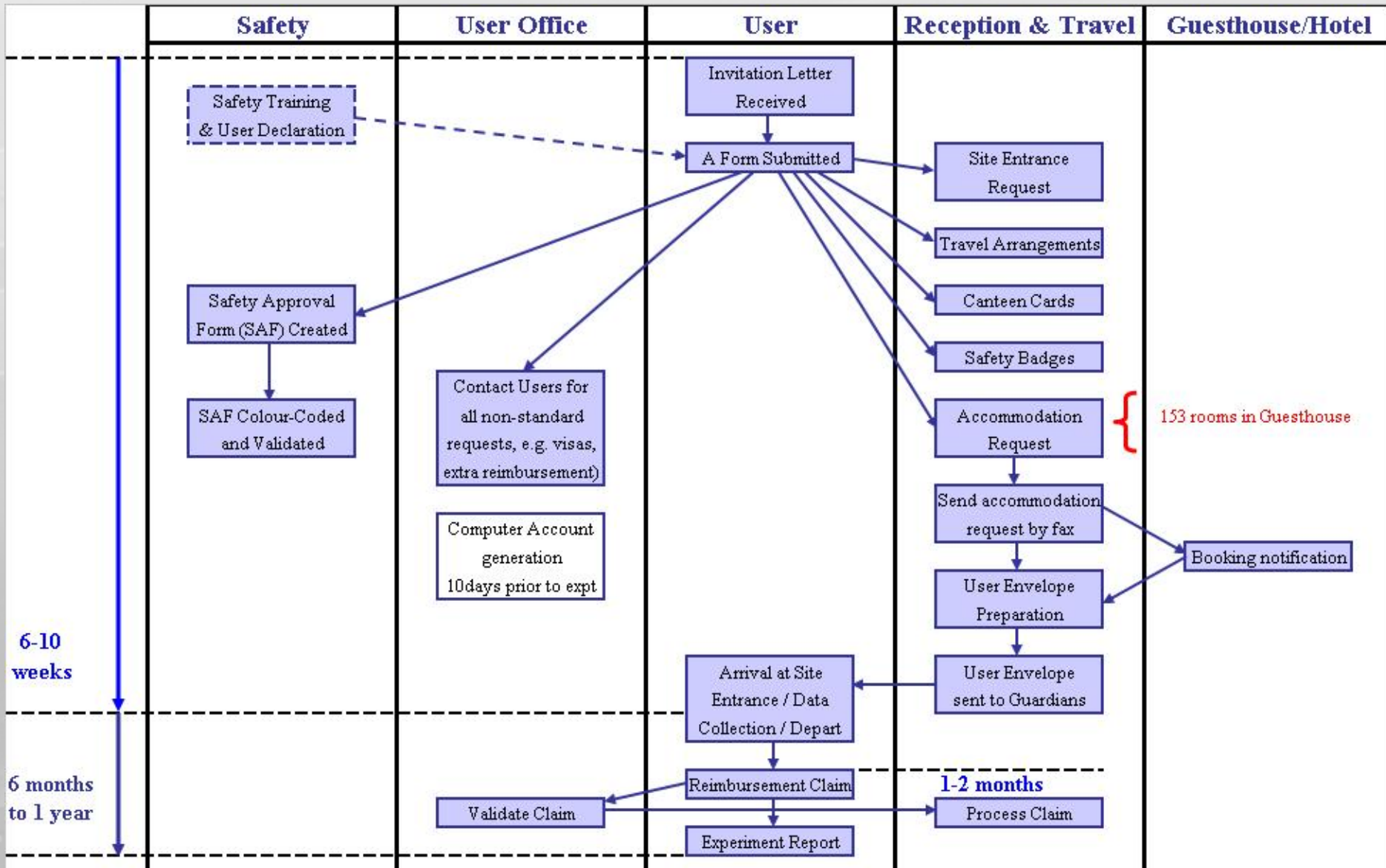
LONG TERM PROJECT Proposals

MX BAG Proposals

MX Rolling Proposals







Proposal Workflow

- The typical workflow from user registration and proposal submission, through review process and scheduling until report submission
- Each major task is supported by the SMIS User Portal

User Registration

Proposal submission

Publication references

Feasibility comments

Grading

Review Committees

Proposal acceptance

Scheduling

Invitation letters

A Form

Safety training

Sample sheets

Safety evaluation

User accommodations

Travel arrangements

EXPERIMENT

Report submission

User Registration



User



User Office

- Proposal submission
- Publication reference
- Feasibility comments
- Grading
- Review Committees
- Proposal acceptance
- Scheduling
- Invitation letters
- A Form
- Safety training
- Sample sheets
- Safety evaluation
- User accommodation
- Travel arrangements
- EXPERIMENT
- Report submission



User Portal

Accounts ▾
Proposals/Experiments ▾
Safety ▾
Administration ▾
Other Apps ▾

Manage ESRF User Portal (SMIS) account

— Select user to manage —

Type username's first letters

— Create a new user —

— Account of Joanne MCCARTHY —

User Data	Laboratory	Reimbursement data
Title : Dr.	Country : FRANCE	Street name and number :
Family name : MCCARTHY	City : GRENOBLE	City :
Official name : Mccarthy	Name : ESRF	Country :
First name : Joanne	Address :	Postal code :
Gender : F	6 rue Jules Horowitz	Personal e-mail :
Country of nationality : UNITED KINGDOM	B.P 220	I last updated this information on :
Date of birth : 05/07/1972	F - 38043 GRENOBLE Cedex	Bank name :
Place of birth : London, UK	Lab no. : 200450	Bank town :
Phone : +33(0)4 76 88 24 21		Bank postal code :
Fax : +33(0)4 76 88 26 24		Bank country :
Email : mccarthy@esrf.fr		Account in the name of : MCCARTHY
Account no. : 216695		SWIFT code / BIC :
Staff no. : 010546		International Bank Account Number (IBAN) :
Active staff : YES		

Manage this account

Connect as user

User Registration

Proposal submission



Main Proposer

Connected as: Joanne MCCARTHY [Home](#) [Help](#) [FAQ](#) [Contact](#) [Sign out](#)

Connected as: Joanne MCCARTHY [Home](#) [Help](#) [FAQ](#) [Contact](#) [Sign out](#)

Connected as: Joanne MCCARTHY [Home](#) [Help](#) [FAQ](#) [Contact](#) [Sign out](#)

User Portal

Accounts ▾ Proposals/Experiments ▾ Safety ▾ Administration ▾ Other Apps ▾

Welcome to the Electronic Utilities Application for ESRF Users

Note for Industrial clients

- You should consider the term "Proposal" throughout as an "Experiment"



Change of procedure for proposals aiming at the CRG share of beamtime at French CRG beamlines

- From now on (20/07/2010) all such proposals will be evaluated by the [common French beamtime allocation committee](#). Please note that this does not apply to standard ESRF proposals aiming at the ESRF share of beamtime at French CRG beamlines.

New Proposal | Proposals In progress | Proposals with Final Number/Previous Proposals | In progress, as Co-Proposer

—Manage Previous Proposals (view details, submit reports)—

[Click here to see the proposals existing in the ESRF database.](#)

Change the number of proposals shown : 5 ▾

To carry out an action related to a proposal, click on the appropriate icon.

Code	Title	Type	Round	Report	Beam	Actions
26-02 438	- Main proposer Wim Bras Reorientation processes in high order liquid crys	CRG DUBBLE-BM26B	4/2008		Y	View proposal details Manage your Experiment Report Manage your samples :
HE 1013	- Main proposer Malcom Cooper Study of the Sm spin density in SmMn2Ge2	STD	10/2000			View proposal details Manage your Experiment Report
HE 1011	- Main proposer Andrew Bebb Temperature dependence of sub-lattice magnetisati	STD	10/2000			View proposal details Manage your Experiment Report
28-01 74	- Main proposer Malcom Cooper Separation of spin and orbital magnetisation from		10/2000		Y	View proposal details Manage your Experiment Report
HE 955	- Main proposer Malcom Cooper Separation of spin and orbital magnetisation from		4/2000	Y		View proposal details Manage your Experiment Report

Report submission

User Registration

Proposal submission

Publication references

Feasibility comments

Grading

Review Committees

Proposal acceptance

Scheduling

Invitation letters

A Form

Safety training

Sample sheets

Safety evaluation

User accommodations

Travel arrangements

EXPERIMENT

Report submission



Beamline Responsible

SMIS Schedule View Page - Windows Internet Explorer

http://mis1:8080/misapps/SMISWebClient/protected/scheduling/viewSchedule.do?action=rollToNextWeek&week=5&run=61&year=2008&includeCancelled=false&includeInhouse=true&beamline=

SMIS Schedule View Page

Welcome Stefan Schulze

TEST SMIS Web Client

Accounts Experiments Reception Treasury Travel Safety Other Applns

Experiments

Proposals
Manage Proposals
A Forms
BAG Reporting
ESRF/ILL Library
Manage Schedule
Show Finalized Runs

Home
Help
FAQ
Logoff
Contact
Copyright © 2006 ESRF

Week 6 Run 1/08

Year: 2005 2006 2007 2008 2009 Run: 1/08 2/08 3/08 4/08 Week: 3 4 5 6 7 8 9 10 11 12 13 Cancelled: Hide Show IHR & BLC: Hide Show

	Monday, 4 Feb 2008	Tuesday, 5 Feb 2008	Wednesday, 6 Feb 2008	Thursday, 7 Feb 2008	Friday, 8 Feb 2008	Saturday, 9 Feb 2008	Sunday, 10 Feb 2008
ID11	ID11 Run 1/08 finalized						
08:00	16 Bunch 90mA BLC LC: G. VAUGHAN	No Beam MDT BLC-3828 LC: G. VAUGHAN	No Beam MDT	16 Bunch 90mA HS-3423 MP: LAUSI LC: J. WRIGHT	16 Bunch 90mA HS-3423 MP: LAUSI LC: J. WRIGHT	16 Bunch 90mA HS-3423 MP: LAUSI LC: J. WRIGHT	16 Bunch 90mA HS-3423 MP: LAUSI LC: J. WRIGHT
16:00	16 Bunch 90mA BLC LC: G. VAUGHAN	No Beam MDT BLC-3828 LC: G. VAUGHAN	No Beam MDT	16 Bunch 90mA HS-3423 MP: LAUSI LC: J. WRIGHT	16 Bunch 90mA HS-3423 MP: LAUSI LC: J. WRIGHT	16 Bunch 90mA HS-3423 MP: LAUSI LC: J. WRIGHT	16 Bunch 90mA HS-3423 MP: LAUSI LC: J. WRIGHT
16:00	16 Bunch 90mA BLC LC: G. VAUGHAN	No Beam MDT BLC-3828 LC: G. VAUGHAN	No Beam MDT	16 Bunch 90mA HS-3423 MP: LAUSI LC: J. WRIGHT	16 Bunch 90mA HS-3423 MP: LAUSI LC: J. WRIGHT	16 Bunch 90mA HS-3423 MP: LAUSI LC: J. WRIGHT	16 Bunch 90mA HS-3423 MP: LAUSI LC: J. WRIGHT
24:00	16 Bunch 90mA BLC LC: G. VAUGHAN	No Beam MDT BLC-3828 LC: G. VAUGHAN	No Beam MDT	16 Bunch 90mA HS-3423 MP: LAUSI LC: J. WRIGHT	16 Bunch 90mA HS-3423 MP: LAUSI LC: J. WRIGHT	16 Bunch 90mA HS-3423 MP: LAUSI LC: J. WRIGHT	16 Bunch 90mA HS-3423 MP: LAUSI LC: J. WRIGHT
00:00	16 Bunch 90mA BLC LC: G. VAUGHAN	No Beam MDT BLC-3828 LC: G. VAUGHAN	No Beam MDT	16 Bunch 90mA HS-3423 MP: LAUSI LC: J. WRIGHT	16 Bunch 90mA HS-3423 MP: LAUSI LC: J. WRIGHT	16 Bunch 90mA HS-3423 MP: LAUSI LC: J. WRIGHT	16 Bunch 90mA HS-3423 MP: LAUSI LC: J. WRIGHT
08:00	16 Bunch 90mA BLC LC: G. VAUGHAN	No Beam MDT BLC-3828 LC: G. VAUGHAN	No Beam MDT	16 Bunch 90mA HS-3423 MP: LAUSI LC: J. WRIGHT	16 Bunch 90mA HS-3423 MP: LAUSI LC: J. WRIGHT	16 Bunch 90mA HS-3423 MP: LAUSI LC: J. WRIGHT	16 Bunch 90mA HS-3423 MP: LAUSI LC: J. WRIGHT

Add beamline: Experiment color: Invitation letter sent Invitation letter must be re-sent

Go to day: Click her for HELP

- User Registration
- Proposal submission
- Publication references
- Feasibility comments
- Grading
- Review Committees
- Proposal acceptance
- Scheduling
- Invitation letters
- A Form**
- Safety training
- Sample sheets
- Safety evaluation
- User accommodations
- Travel arrangements
- EXPERIMENT
- Report submission



Main Proposer

The screenshot shows the ESRF User Portal interface. A central blue circle labeled 'A Form' is connected to several other blue circles representing services: 'Samples & Environment', 'Site Entrance Request', 'Storage ring access rights', 'Canteen card', 'Guesthouse / hotel', 'Reimbursement', and 'Safety Approval Form'. The background shows a table of 'Experiment sessions and A Forms' with columns for Proposal, Start date, End date, and Last submission date.

Proposal	Start date	End date	Last submission date
MX-936	01/09/2009	31/08/2009	26/08/2009
MX-936	01/10/2009	02/10/2009	23/09/2009
MX-936	03/10/2009	05/10/2009	03/09/2009
MX-936	05/10/2009	06/10/2009	
MX-936	24/10/2009	26/10/2009	
MX-936	01/11/2009	02/11/2009	
MX-936	08/11/2009	09/11/2009	
MX-936	13/11/2009	15/11/2009	
MX-936	14/11/2009	16/11/2009	
MX-936	20/11/2009	22/11/2009	
MX-936	26/11/2009	27/11/2009	
MX-936	02/12/2009	03/12/2009	
MX-936	05/12/2009	07/12/2009	
MX-936	07/12/2009		07/12/2009
MX-936	023-2		16/12/2009
MX-936	023-1		18/01/2010
MX-936	023-2		13/01/2010
MX-936	014-4		11/01/2010
MX-936	023-1		11/02/2010
MX-936	014-1		16/02/2010
MX-936	014-4		24/02/2010
MX-936	023-2		11/03/2010
MX-936	014-2		04/03/2010
MX-936	014-4		22/03/2010



- User Registration
- Proposal submission
- Publication references
- Feasibility comments
- Grading
- Review Committees
- Proposal acceptance
- Scheduling
- Invitation letters
- A Form
- Safety training**
- Sample sheets
- Safety evaluation
- User accommodations
- Travel arrangements
- EXPERIMENT
- Report submission

User Portal

Accounts ▾ Proposals/Experiments ▾ Safety ▾ Administration ▾ Other Apps ▾

Previous ◀ Next ▶

ESRF Safety Training_ Users
Version 2: 11/08/11

Personnel

The PSS panel, situated in the safety system. It enables the user to perform the four electronic di...

User Portal

Accounts ▾ Proposals/Experiments ▾ Safety ▾ Administration ▾ Other Apps ▾

Welcome to the ESRF User Portal (SMIS)

Please use the menu bar on top of this page to select your subject of interest and the sub menus on the left side to select the action you want to perform. Use [help](#) if anything is unfamiliar for you or [contact us](#).

You can use the FAQ page (the link is at the bottom of the left side bar) to get information on the different features of the application.

If you need access to other SMIS applications, please select them [here](#). If your application is not in the list please [contact us](#).

SUBMISSION OF THE PROPOSALS :

- Please try to submit your proposal as early as possible in order to avoid overloading the applications system.

General Information

- You performed your last safety training on: 09/02/2012
- You performed your last staff refresher safety training on: 09/02/2012

Upcoming Events

- SpLine Meeting (16 Apr 2012 - 17 Apr 2012)
- CRISP Annual Meeting (23 Apr 2012 - 25 Apr 2012)

Proposal Submission

- Please use the "Proposals/Experiments" Tab to :
 - Submit Proposals and check their status
 - Submit Sample Sheets and Experiment Reports
 - List and consult previous Proposals/Experiments



Main Proposer

- User Registration
- Proposal submission
- Publication references
- Feasibility comments
- Grading
- Review Committees
- Proposal acceptance
- Scheduling
- Invitation letters
- A Form
- Safety training
- Sample sheets**
- Safety evaluation
- User accommodations
- Travel arrangements
- EXPERIMENT
- Report submission

SAMPLE INFORMATION & SAFETY SHEET - Windows Internet Explorer

ESRF **SMIS Web Client**

SAMPLE INFORMATION & SAFETY SHEET

Sample #: 2121
Proposal / Experiment #: MX-410

* = Mandatory Field. ? = Tooltip. [] = Read-Only Field.

Complete all tabs prior to submission!

Description | Handling / Equipment | Certify And Save

- Text Description of Sample and Protein *

Sample Description: TEST sample for MIS group Protein Acronym: skjbd

- Classification Of The Substance *

Tissue
Crystal
Powder
In Solution
Other

If Powder or Solution, concentration and/or amount of substance: []

If Tissue or Other, please specify: []

- Classification Of The Sample *

Radioactive Contaminant Toxic Flammable Explosive Corrosive Oxidizing Synthetic

Biological Other (give a short explanation): []

- Synthetic Or Biological Sample *

Source Organism * MIS group

Class Of Risk *

Class 1: biological agent unlikely to cause human disease
Class 2: biological agent that can cause human disease
Class 3: biological agent that can cause severe human disease (prophylaxis, treatment available)
Class 4: biological agent that causes severe human disease (no prophylaxis, treatment available)

Is the sample recombinant? * (If yes: "Expression Host" and "Class Of Risk"; below must be provided)

Expression Host *

Class Of Risk *

Class 1: biological agent unlikely to cause human disease
Class 2: biological agent that can cause human disease
Class 3: biological agent that can cause severe human disease (prophylaxis, treatment available)
Class 4: biological agent that causes severe human disease (no prophylaxis, treatment available)

Provide the maximum containment level in which you are working with your sample in your home institute *

Level 1
Level 2
Level 3
Level 4

At the ESRF only Levels 1 and 2 are accepted. Levels 3 and 4 are strictly forbidden!

Copyright © 2006 ESRF

Proposal
 Proposal and experiment session
 Experiment session



Safety Officer

- User Registration
- Proposal submission
- Publication references
- Feasibility comments
- Grading
- Review Committees
- Proposal acceptance
- Scheduling
- Invitation letters
- A Form
- Safety training
- Sample sheets
- Safety evaluation**
- User accommodations
- Travel arrangements
- EXPERIMENT
- Report submission

TEST User Portal (-test-)

Accounts | Proposals/Experiments | Reception | Safety | Administration | Review Process | Other Apps

Update proposal comments

Proposal: MX - 1194

Expert: [Select]

Accounts | Proposals/Experiments | Reception | Safety | Administration | Review Process | Other Apps

Welcome to the Electronic Utilities Application for ESRF Managers

Criteria for extraction of Forms A and Sample Sheets Data

Start Dates of experiments between: [] AND: []

Beamline(s): [Select ...] ID01 ID02

Proposal Round(s): 2011/4 2010/10 2010/4

Category: MX

The beamtimes should be treated as: Actually allocated

Search through scheduled experiments WITHOUT COLOUR only! []

[Start] [Clear filters] [Refresh List]

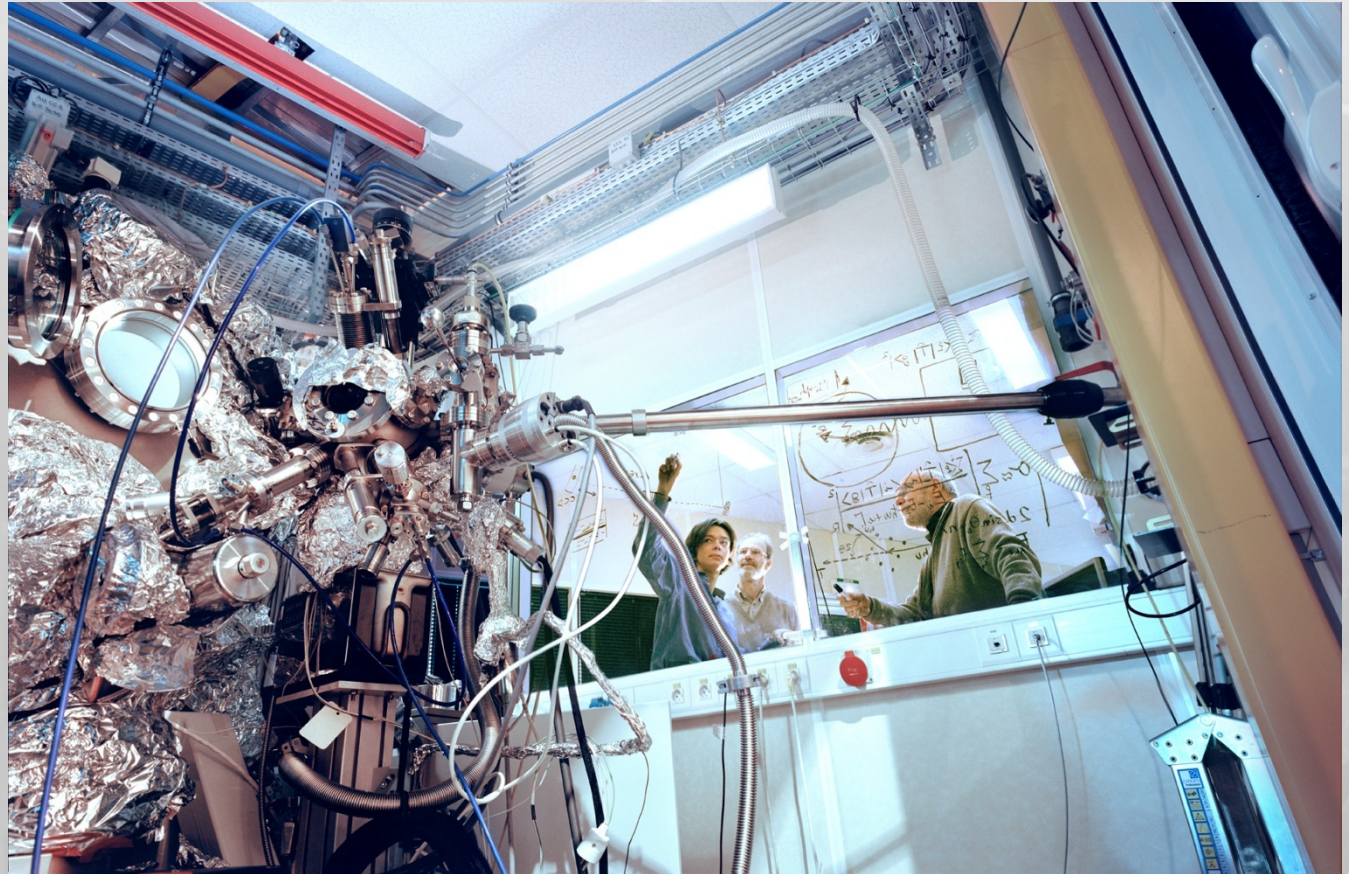
Result

Proposal	Experiment Session	Assign Exp. Session Colour	Print SAF	Samples for the Experiment Session (Form A)	Other samples linked to the proposal
MX 1039	022-1.03 Sep 2010 - 04 Sep 2010	Green	Template: Select ... SAF SAFREMOTE	Airport Form: FR GB GB CK2 DNA ligase IV-XRCC4 DNA ligase IV-XRCC4 Hepaticocyte Growth F...	DNA dependent prote... Exp. Encapsid... Abundant sulbat...
	022-1.06 Sep 2010 - 07 Sep 2010	Yellow	Template: Select ...	Airport Form: FR GB GB DNA dependent prote... DNA ligase IV-XRCC4 DNA ligase IV-XRCC4 Hepaticocyte Growth F...	CK2 DNA ligase IV-XRCC4 DNA repair XI-XRCC... Hepaticocyte Growth F... Hfq RNAse I NADH dependent enoy...
	022-1.08 Sep 2010 - 09 Sep 2010	Yellow	Template: Select ...	Airport Form: FR GB GB Pantothenate syntha... recombinase	safelytic domain of... polynucleotide phos... recombinase
	022-2.16 Sep 2010 - 17 Sep 2010	Green	Template: Select ...	Airport Form: FR GB GB	rbonuclease I
	ID14-1.04 Nov 2010 - 05 Nov 2010	None		Airport Form: FR GB GB	
MX 1040	BM14U 02 Dec 2010 - 03 Dec 2010	None		Airport Form: FR GB GB	Green Negative Bind... Pyrococcus abyssi p... Shikimic acid membra... BvgS soluble domain... Clp protease Parac... Death domain protei... Defective invertase... FoamutFazv DNA Mutant forms of the... Neutral invertases
	ID14-4.17 Dec 2010 - 18 Dec 2010	None		Airport Form: FR GB GB	

Should you require further information, please do not hesitate to contact the Experiment

- User Registration
- Proposal submission
- Publication references
- Feasibility comments
- Grading
- Review Committees
- Proposal acceptance
- Scheduling
- Invitation letters
- A Form
- Safety training
- Sample sheets
- Safety evaluation
- User accommodations
- Travel arrangements
- EXPERIMENT**
- Report submission

Finally: The Experiment!





- User Registration
- Proposal submission
- Publication references
- Feasibility comment
- Grading
- Review Committee
- Proposal acceptance
- Scheduling
- Invitation letters
- A Form
- Safety training
- Sample sheets
- Safety evaluation
- User accommodations
- Travel arrangements
- EXPERIMENT

Connected as: Joanne MCCARTHY Home Help FAQ Contact Sign out

User Portal

Accounts Proposals/Experiments Safety Administration Other Apps

Standard Application for Beam Time at the ESRF

New proposal

General Information Research Area Beamlines Request Proposers Laboratory Support Facility Sample Environment Sample Description Safety Experience Publications

Proposal Title (175 chars maximum.)

Keywords #1 #2 #3 #4

Proposal Definition

- This proposal is:
 - A new proposal
 - A resubmission of
- A proposal relating to research in collaboration with an industrial group
 - A continuation of
- Relevant reports: Please specify your most recent experiment(s) at ESRF for which you have submitted report(s), and which are relevant to this new proposal
 - #1:
 - #2:
 - #3:

Please complete information required under all Tabs before clicking on the 'Save' button.

Back Save View as PDF Save Draft

* = Mandatory Field

Report submission


Reports & Publications

Use of PUBLIC ESRF
= OBLIGATION to PUBLISH and REP

Reporting

- Users allocate each experimenter
- forward
- require

- There is also a Web-based [User Evaluation Questionnaire](#) where users report their experiment, any failures and reasons for failures and support from the beamline and administrative staff

	Experiment title:	Experiment number:	
	Beamline:	Date of experiment: from: to:	Date of report:
	Shifts:	Local contact(s):	Received at ESRF:
Names and affiliations of applicants (* indicates experimentalists):			
Report:			

User Evaluation Form

by [Marie Robichon](#) — last modified 07-09-2010 16:08

This form is to be completed by each user team coming to carry out an experiment at the ESRF. Details which you fill in will be transmitted to the appropriate members of staff and the Users Organisation, and summaries of the responses will be made for ESRF Management and for the Science Advisory Committee.

Experiment No:

Beamline:

Local contact:
Name + Surname

Shifts allocated:

Shifts scheduled:

Shifts used:

Indicate the degree of success of your experiment:

Very Successful

Satisfactory

Fell below expectations

Unsuccessful

If less than satisfactory, please estimate the total time lost:

Please give reason for any time lost:

Machine or storage ring failure

Failure of beamline components

Computer failure

Sample Problems

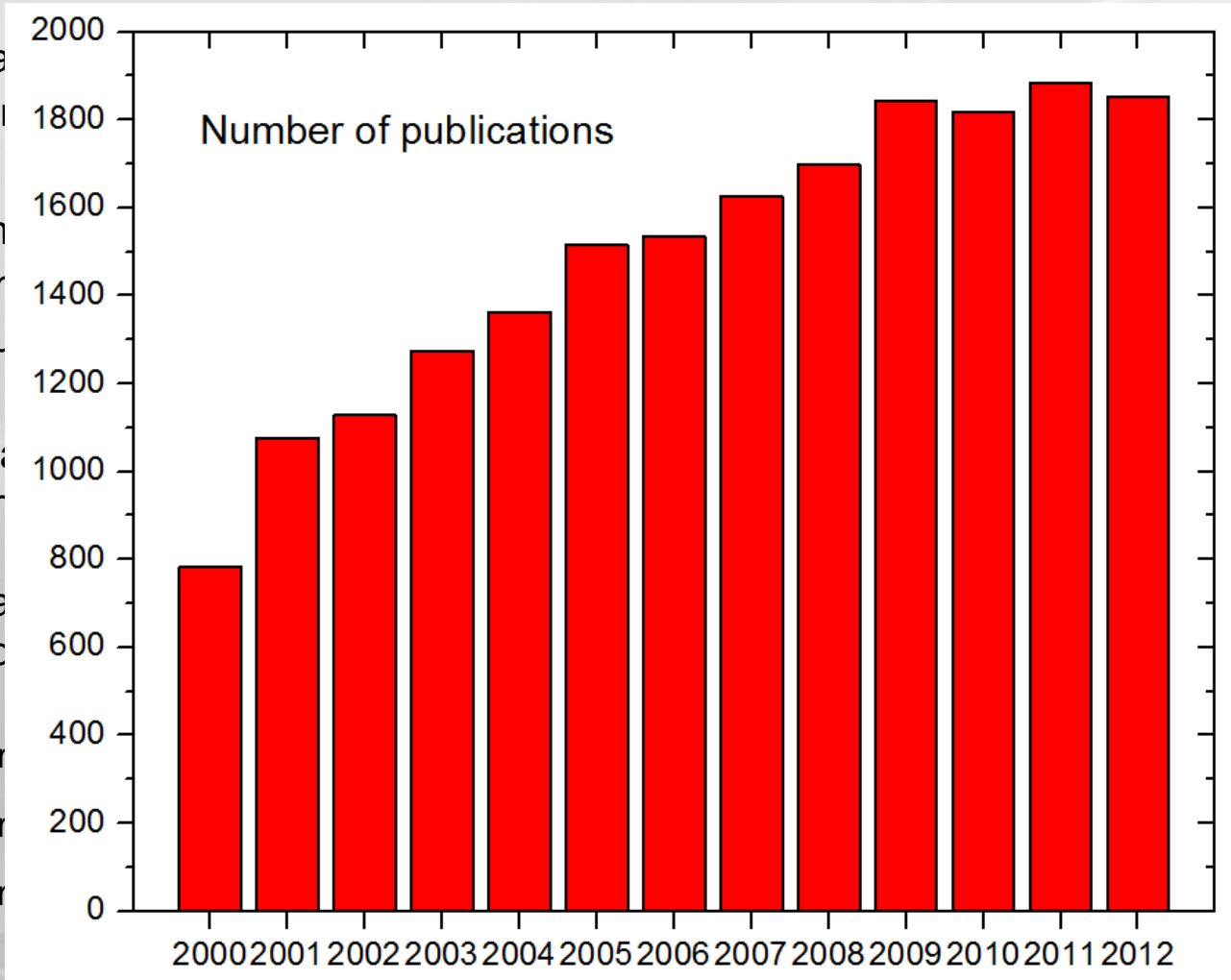
Other

Details concerning time loss:

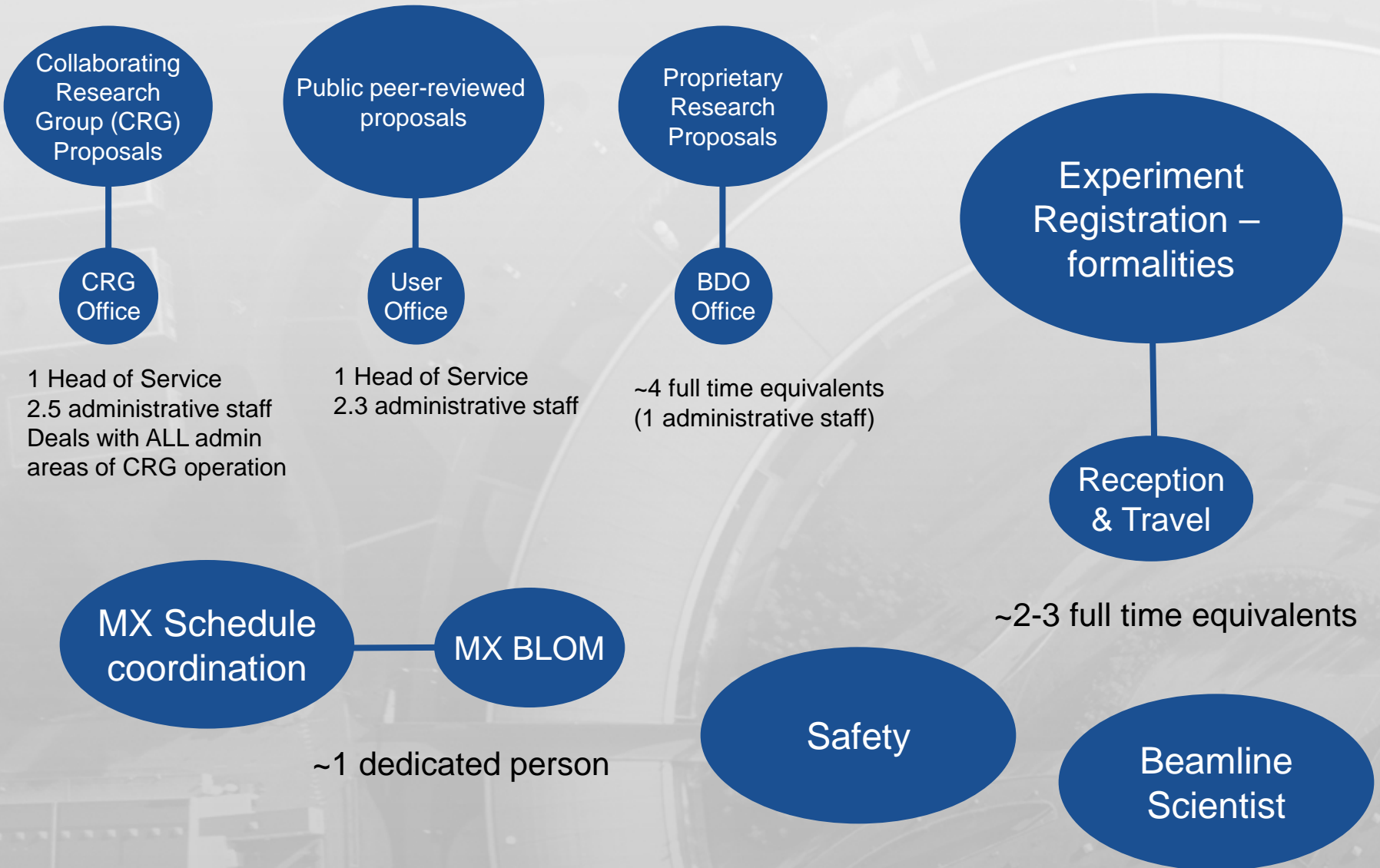
What measures could be taken to improve the effectiveness of your beamtime ?

Publications

- Users a public bear
- Users n facilities, th ensuing pu
- Proposa not publish
- Users a ESRF by c
- r
- r
- r



- of ESRF
- ESRF ed in any
- ord....groups
- ents made at
- abase



➤ Proposal Review

- printing proposals (UO, beamline scientists, committees, Directors, Safety), contacting incomplete submissions, organisation of BTAP meetings (contact members, registration, accommodation, local transport...), correspondence (acknowledgement, decision letters).....
- proposal assignment to committees, management of LT proposals, contact with committee members, compilation of data (TF assessments, grades) for panel meetings, fair scientific return and pro rata calculations, processing of results of panel meetings, rejection comments.....

➤ Experiment Organisation

- validation of beamline schedules, invitation letters, experiment modifications in database, protocols, visa requests, validation of reimbursement claims, pre-validation of all non-standard requests (submitted via email or A-Form), proposal management & archiving....

➤ User Meeting & other workshops

➤ SMIS tests & validation

➤ Statistics & Reports

➤ General User Administration

- account and laboratory validation
- User Web pages
- BAG administration (groupings, correspondence...)
- Follow-up of LTP reports
- Questions & Queries

- Scientific Use for Council
- DG Report for AFC (full 6-monthly stats)
- Beamline Review Panels
- Annual Highlights
- BTAP summaries....

➤

The Business Development Office

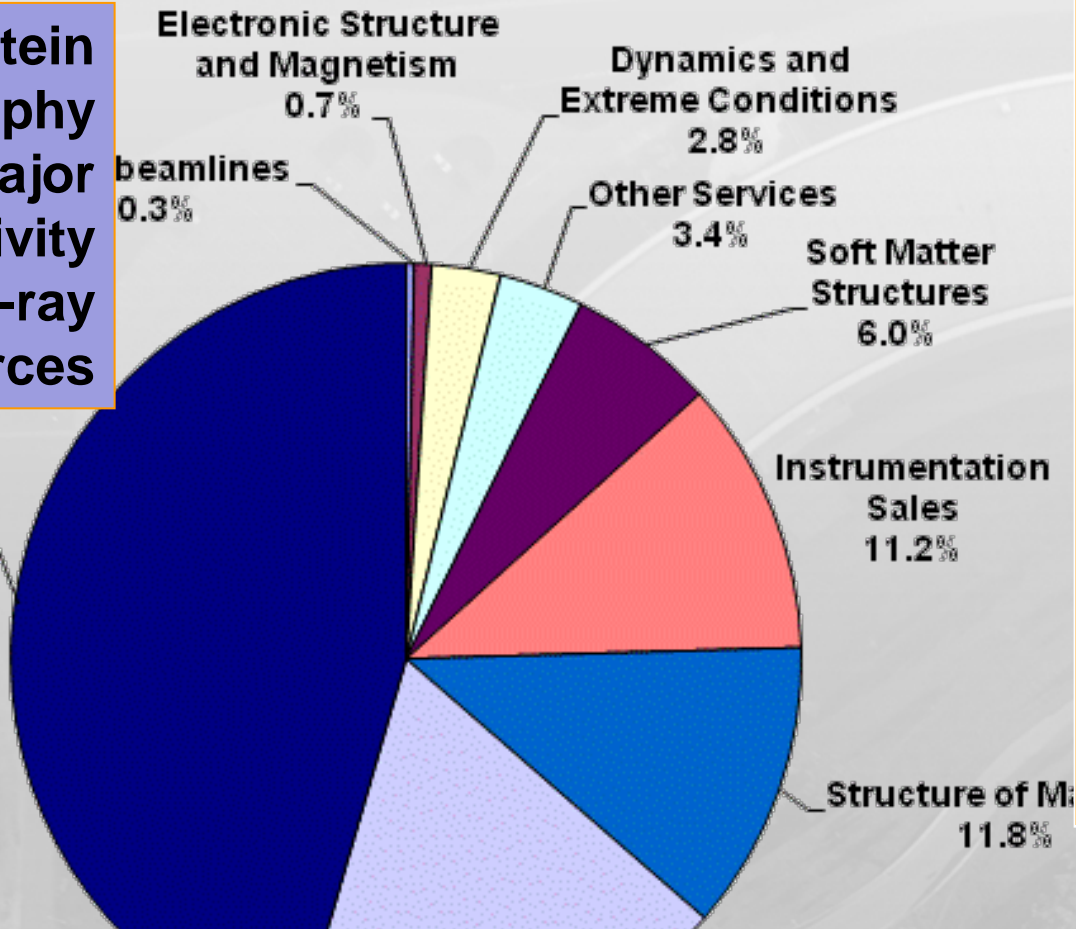
- Dedicated point of contact and organisation for all industrial activities
 - proprietary beam time and customised R&D services (inc. contract research)
 - patents, licences
 - collaborations with industry
 - encouraging industry to use peer review time and LTPs
 - pre-competitive procurement opportunities (more of a wish than reality so far)
 - education and training for industry
 - joint (national, European) grants and partnerships with industry (inc. PhDs etc)
 - building alliances for a better service to industry
 - engineers/scientists for MX and Imaging

- Self-financing (<10% of total income)

- About four full-time equivalents



Protein crystallography now the major industrial activity at other X-ray sources

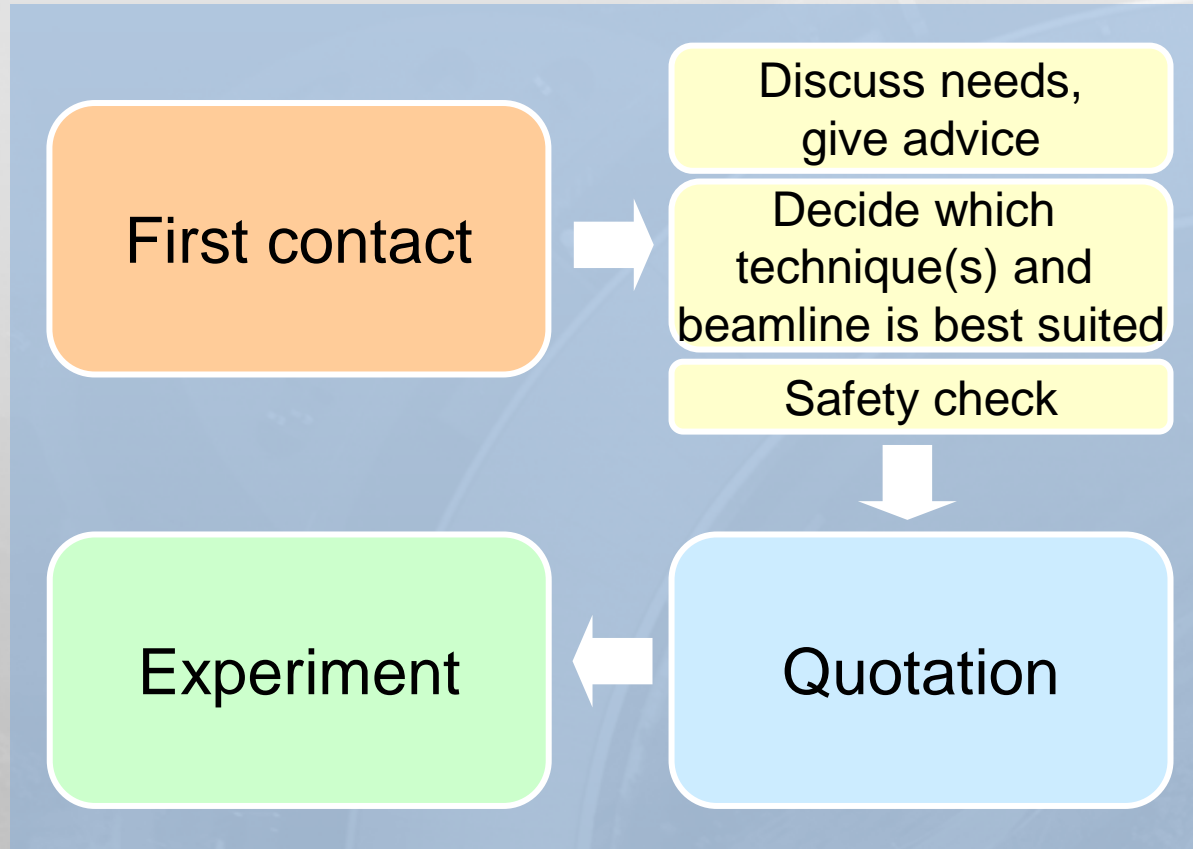


Generated >25MEuros

Used to fund staff positions, purchase new equipment, fund beamlines

- 2011: 2.2MEuros income generated
- Beam access by industry represents about 2% of beam time capacity; but about 10% of allocatable income

BDO manages whole process with industry






Beamtime Constraints

- < 10% of total beamtime available
- < 30% of beamtime available on single public beamline
- currently have no beamline for 100% PR but could have if requested


APPLICATION FORMS : NON-PEER REVIEWED


NON-MACROMOLECULAR CRYSTALLOGRAPHY Experiments (“IN”)

MACROMOLECULAR CRYSTALLOGRAPHY Experiments (“IX”)


User Portal
Connected as: Joanne MCCARTHY  Umbrella  Home

Accounts ▾
Proposals/Experiments ▾
Safety ▾
Administration ▾
Review Process ▾
Other Apps ▾

Welcome to the Electronic Utilities Application for ESRF Users 

 [Note for Industrial clients](#)

- You should consider the term "Proposal" throughout as an "Experiment"




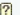


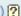
New Proposal
Proposals In progress
Proposals with Final Number/Previous Proposals
In progress, as Co-Proposer

Information for users

- Please consult the [Information on Data Provided concerning Scientific Use of ESRF](#)
- The next Deadline for the submission of Standard ESRF proposals is: **Sunday, September 01 2013 (inclusive)**
- The next Deadline for the submission of Long Term Project proposals is: **Wednesday, January 15 2014 (inclusive)**
- Before creating your proposal, make sure that each co-proposer has created his(her) account.

– Submit New Proposal –

To create your Beamtime Application Form, select the appropriate Proposal by clicking on the corresponding button.

- Standard ESRF Proposal 
- Structural Biology : Rolling Proposal 
- Structural Biology : BAG Proposal 
- Long-Term Project 
- CRG Proposal 
- Industrial Experiment (Non Macromolecular Crystallography) 
- Industrial Experiment (Macromolecular Crystallography) 

Please select :

...
...
Experiment to be carried out by ESRF Staff
Experiment to be carried out by Industrial Client

Users' Organisation

Made up of representatives of the ESRF User community

Members elected by User community (7 scientific areas)

Report to Scientific Advisory Committee and Management every 6 months on feedback from Users, organise the ESRF Users Meeting in conjunction with User Office

The Users Organisation Committee (UOC)

[Thomas Buslaps](#) (ESRF) - ESRF local liaison

[Paola Coan](#) - X-ray imaging

[Olivier Diat](#) - Soft matter structures

[Christian Kumpf](#) - Surface and interface science

[Chiara Maurizio](#) (chairperson) - Structure of materials

[Claudio Mazzoli](#) - Electronic structure and magnetism

[Chrystele Sanloup](#) - Dynamics and extreme conditions

[Beatrice Vallone](#) - Structural biology

User Meeting

Annual ESRF Users' Meeting associated with 2-3 satellite workshops

Takes place typically in February each year

More than 300 users attend the Users Meeting

- UP
- Organisation
- Synchrotron science
- ESRF Upgrade Programme
- Services
- Press room
 - ESRF quick facts for Journalists
 - Introduction to the ESRF for Journalists
- Information material
- Ask an expert
- Campus and directions
- Visit an Institute

Home / About Us / Press room

Press room



02-05-2013

Dear Journalist,

Please do not hesitate to contact press@esrf.fr or +33 4 7688 2128 for any query. We will do our best to get back to you on the same day.

If you wish to receive ESRF press releases (about ten per year), please send a brief email to press@esrf.fr and mention whether you wish to receive these in English, French or German.

To arrange an interview with an ESRF scientist by telephone or email, or to arrange a visit, please contact us at press@esrf.fr or, if it is urgent, call +33 666 662 384.

Claus Habfast
Head of Communications

Resources for journalists

[ESRF quick facts](#)

[Introduction to ESRF for Journalists](#)

[Images](#) [new window]

[Videos](#) [new window]

Broadcast quality files: please contact [Claus Habfast](#)

General news

Good vibrations: students rate the ESRF
Sea squirt solves crystal conundrum
ESRF hosts Matchmaking between Dutch Industry and Grenoble R&D companies

ESRFnews
Subscribe to the free digital edition

Documents and videos

ESRFnews Highlights
A Light for Science
Synchrotron X-ray Solutions for Industry
Science and Technology Programme 2008-2017
ESRF Video Presentations

[more](#)

of the Dutch Ambassador and other prestigious guests, more than 20 hi-tech companies from The Netherlands displayed their products and expertise in the newly inaugurated Belledonne experimental hall of the ESRF...

[Read more...](#)

[More News](#)

18-06-2013
Materials for spintronic applications need to have both magnetic and semiconducting properties. But an intrinsic semiconductor that is magnetic at room temperature has yet to be found. The europium chalcogenides (EuO, EuS, EuSe, EuTe) are promising...

[Read more...](#)

more...

Fe-based superconductors
06-09-2013 15:00
Static and dynamic compression of metals probed by synchrotron radiation
09-09-2013 16:15
Effects of diluting Mn sublattice on the multiferroic properties of

trons/funding bodies)

Printed Publications

- ESRFnews
 - news magazine published 4 times a year
 - nearly 10000 subscribers
- ESRF Highlights
 - annual report
 - 3500 print copies + 35000 online
- Specific brochures
 - e.g. in 2013, impact of synchrotron radiation on society (science, innovation, education)

Visitors Centre

- Currently 4000 visitors per year
- Scientists and non-scientists
- Have capacity for up to 10000 visitors
- New Visitors Centre with 10000 seats

UP
Organisation
Synchrotron science
ESRF Upgrade Programme
Services
Press room
Information material
<ul style="list-style-type: none"> ▪ ESRF videos ▪ Image collection ▪ Brochures ▪ Science in School
Ask an expert
Campus and directions
Visit an institute



The screenshot shows the 'Information material' page on the ESRF website. The page has a navigation bar at the top with 'Home / About Us / Information material'. Below the navigation bar is a search bar and a 'Print' icon. The main content area is titled 'Information material' and features a date '18-06-2013'. There are several featured items:

- ESRFnews**: An online news magazine published four times a year, reflecting ongoing scientific and technical developments. Each issue features a focus topic. Subscription is free of charge.
- ESRF Highlights**: Give a concise overview of scientific and technical progress. It is published annually in print and online versions. Subscription is free of charge.
- ESRF Videos**: Span a range of subjects and lengths and are also available on a YouTube channel [Light for science](#).
- ESRF Brochures**: Give an overview of the facility and present applications of synchrotron light, in several languages, in the form of PDF files.
- Image bank**: A collection of high-quality images from the ESRF can be found in the [image bank of Lightsources.org](#).

On the right side of the page, there are two red headers: 'Events' and 'Seminars'. Under 'Events', there is a link for 'HSC15: Synchrotron X-ray Imaging for Biology'. Under 'Seminars', there is a link for 'The local structure of the Fe-based superconductors: static and dynamic compression of metals probed by synchrotron radiation'.

**Thank You
for your attention!**

