

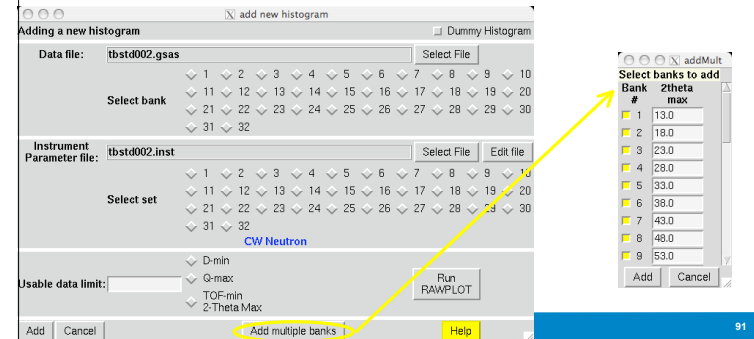
### Problem 7: How Can I Deal With Multiple Histograms?

- EXPEDT has many features that allow flags to be set for many histograms at the same time. Is there a way to do this in EXPGUI?
  - Yes: by using “Multiple Histogram Selection”
- “Multiple Histogram Selection” affects the Least Squares, Histogram, Scaling, Profile and March-Dollase panels
- Note: In “Multiple Histogram Selection” mode, histograms are grouped either
  - Together by type *or*
  - Heterogeneously (“any type”) -- all types together
    - In “any type” mode, Profile & Histogram parameters are not accessible
- Before that -- how to add multiple histograms in one swell foop?

90

### 7.1 Adding Multiple Histograms

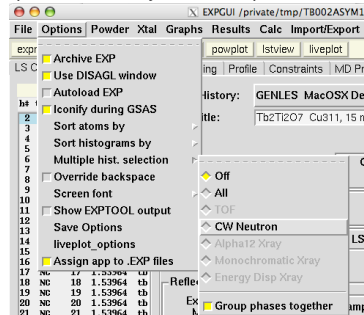
- When the number of banks in a GSAS data (.raw) file match the number of banks defined in the instrument parameter file, the “Add Multiple Banks” option on the Add New Histogram subwindow is made available:



91

### 7.2A Turn on Multiple Histogram Selection

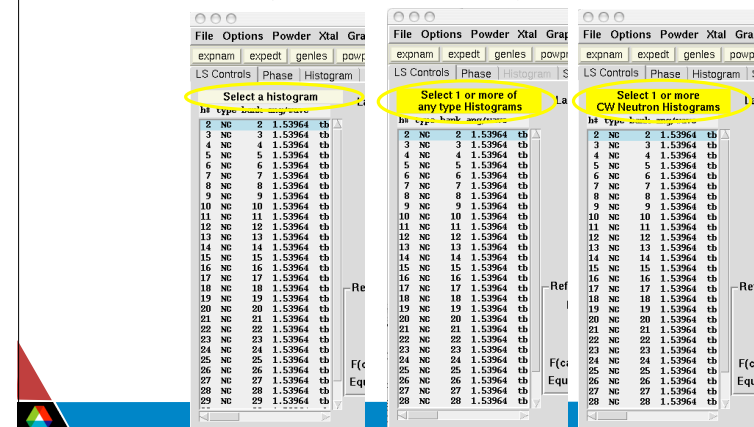
- Two mechanisms to turn on Multiple Histogram Selection:
  1. Options/Multiple hist. selection
    - “Group Phases Together” option affects only the Profile panel



92

### 7.2B Turn on Multiple Histogram Selection

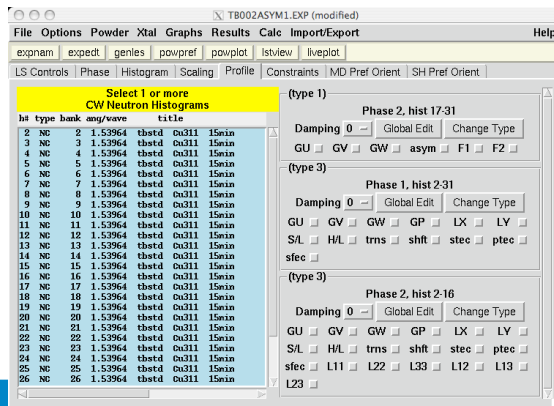
2. Click on “Select Histogram” label (selection mode cycles on click)



### 7.3A Multiple Histogram Selection: Profile Panel

- Profile panel with "Group Phases Together" set as OFF

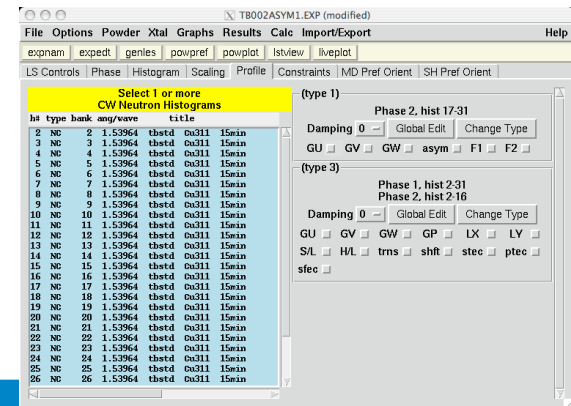
Note that each phase & profile type is listed separately



### 7.3B Multiple Histogram Selection: Profile Panel

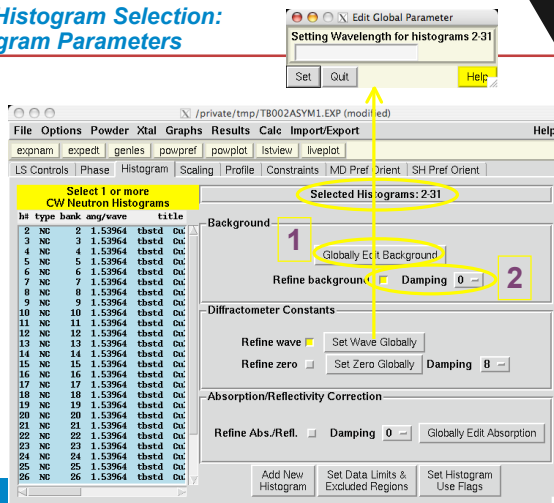
- Profile panel with "Group Phases Together" set as ON

Note that now phase 1 & 2 are grouped together where the profile type is the same.



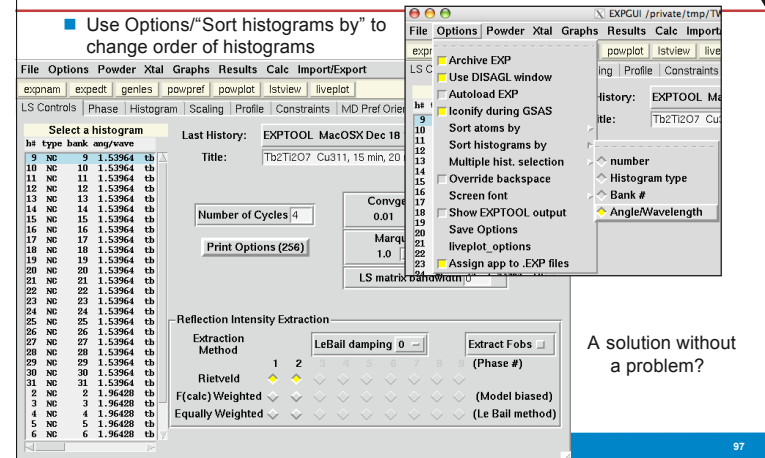
### 7.4 Multiple Histogram Selection: Histogram Parameters

- Global edit buttons will set parameter values for all selected histograms
  - Refinement controls affect all selected histograms
- The other panels work similarly



### 7.5 Cute EXPGUI Histogram Trick: Sort Histograms

- Use Options/"Sort histograms by" to change order of histograms



A solution without a problem?