



PSC

DIVERSITY EQUITY & INCLUSION COUNCIL

Fanny Rodolakis – DEI Council Chair
29-ID IEX Beamline Scientist

Becky Sikes – DEI Council Co-Chair
Lead User FVA/Registrations Administrator

A continuous improvement journey



PSC DEI Council Strategic Priorities



Impact
Safety
Respect
Integrity
Teamwork

DEI COMMITMENT

Argonne's Core Values – Impact, Safety, Integrity, Respect, Teamwork

STRATEGIC PRIORITIES

Culture & Workplace

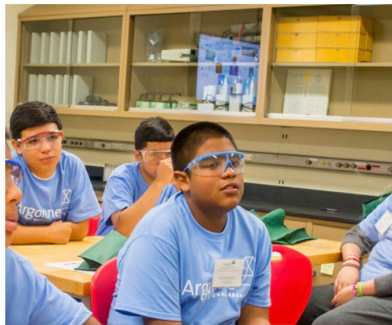
- DEI Webpage
- DEI Newsletter
- Voice of PSC

Career & Workforce

- APS Leaders equipped to include DEI topics in regular division meetings.
- DEI Training/Workshops

Community & Partnership

- Collaborate with DEI Councils and ERGS
- Community Outreach & Educational Programs



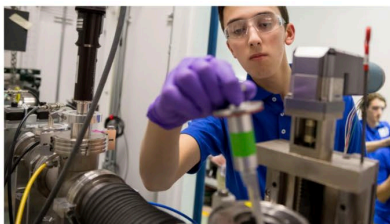
Argonne in the Classroom



GEM
THE NATIONAL GEM CONSORTIUM



Exemplary Student Research Program

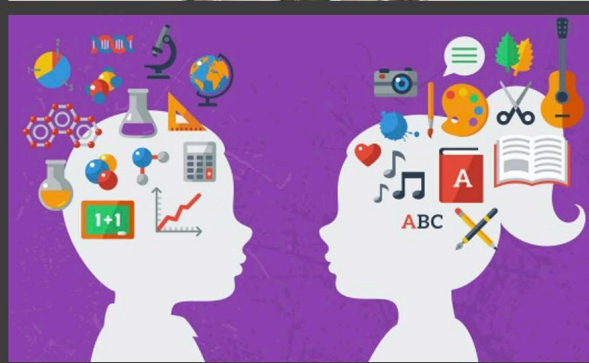



24TH National School on Neutron and X-ray Scattering

July 10–22, 2022
Application deadline: Monday, March 7, 2022



Everyone Can Help:
Don't Be a Bystander,
Be an Ally !



Voice of PSC every 3rd Thursday @ 1PM

2021 topics included:

- Dec Holiday traditions (group share)
- Nov Allyship
- Oct Microaggressions
- Sep Gender roles and stereotypes
- Aug The Mental Load
- June "A Simple Way to Be An LGBTQ Ally"
- July Summer vacation plans (group share)
- May Inclusion - DEI is for everyone
- Apr Intellectual Humility
- Mar Psychological Safety
- Feb Building Trust with Your Manager & Overcoming Overwhelm
- Jan "Picture a Scientist" discussion



Resources for employees to address workplace concerns



SPEAKING UP IF YOU HAVE A CONCERN

Argonne 
NATIONAL LABORATORY

CONTACT

Employee Relations Office
Human Resource Services
Phone: 630-252-3434
Email: hrs-er@anl.gov

CONTACT

Navex Global Hotline
Phone: 877-587-2449
<https://anl.tnwreports.com>

CONTACT

Brad Ginn
Laboratory Ombuds
Phone: 630-252-7098
Email: bginn@anl.gov
<http://inside.anl.gov/pages/ombuds-office>